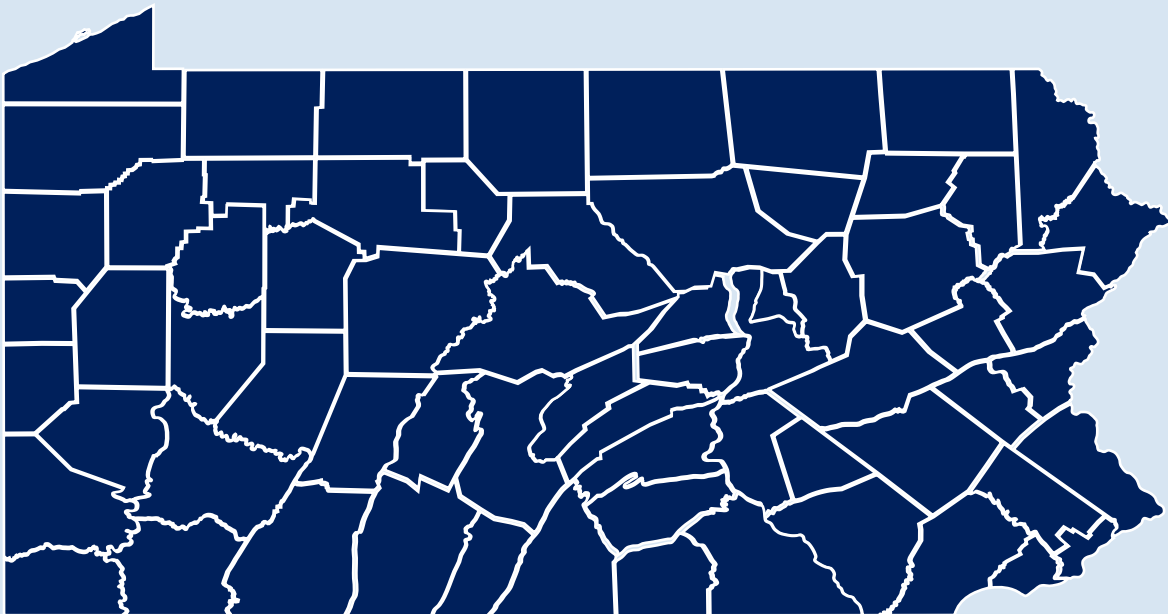




pennsylvania
DEPARTMENT OF HUMAN SERVICES



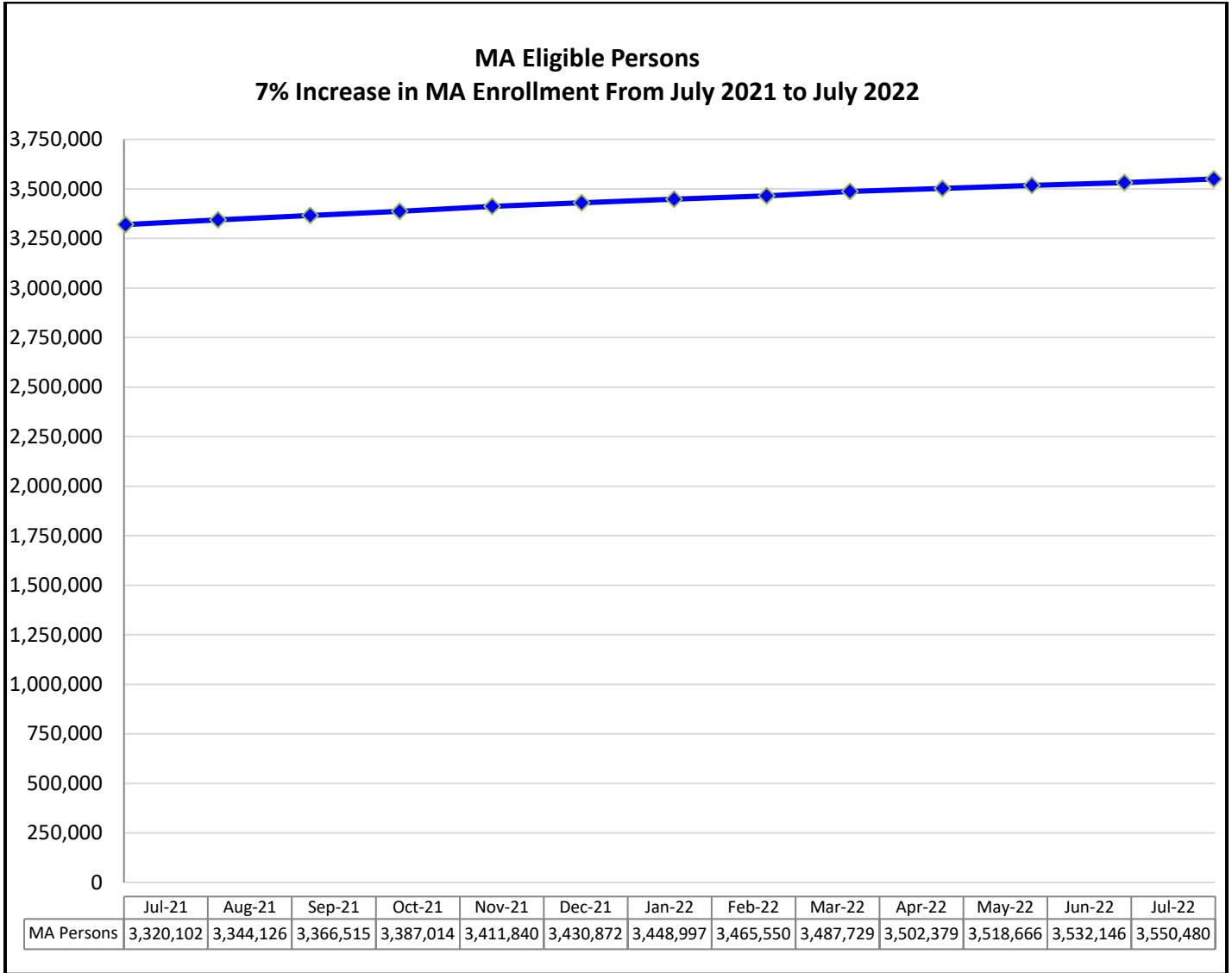
MONTHLY DATA REPORT
JULY 2022

TABLE OF CONTENTS

CTRL+Click on one of the major headings below will link you to that section.

MEDICAL ASSISTANCE AND OTHER HEALTH CARE SERVICES.....	2
MA Eligible Persons.....	2
MA Children and CHIP.....	3
State Hospital Admissions/Census.....	4
BENEFIT ASSISTANCE PROGRAMS FOR CHILDREN AND FAMILIES.....	5
TANF Individuals.....	5
Number and Percent: Non-disabled TANF Adults Working.....	6
Number and Percent: Non-disabled TANF Adults Working/Training 20 or More Hours/Week.....	6
TANF Workforce Participation Rates.....	7
TANF Budgets Leaving for Employment.....	8
Individuals on TANF by Length of Time.....	9
SNAP Eligible Persons.....	10
Non-disabled SNAP Adults Working.....	11
SSI Adults and Children.....	12
Child Support Measures.....	12
CHILD WELFARE SERVICES.....	13
Monthly YDC Admissions.....	13
Children in Out-of-Home Care - More or Less than 12 Months.....	13
Children Entering/Re-entering Out-of-Home Care.....	13-14
Adoption/ Discharges to Guardianship.....	14
Settings of Children in Care.....	15
Months from Removal from Home to Permanency.....	16
Child Abuse - Cases and Rates.....	16
CHILD CARE AND EARLY LEARNING SERVICES.....	16
Child Care Subsidies-Enrollment-Waiting List.....	16
Regulated Child Care Usage.....	17
Subsidized Child Care: Regulated vs. Unregulated Settings.....	17
Children in STARS 3 or 4.....	18
ITF Waiver and EI: Enrollment.....	18
LONG TERM SUPPORTS FOR PERSONS WITH DISABILITIES AND OLDER PENNSYLVANIANS	19
Waiver Enrollments (OLTL):	
Act 150.....	19
OBRA.....	19
LIFE.....	20
Community Health Choices.....	20
Wavier Enrollments (ODP):	
Consolidated and Adult Autism.....	21
P/FDS and Community Living.....	22
Community Living Waiver.....	22
Intermediate Care Facilities: Enrollments.....	23
OTHER METRICS.....	23

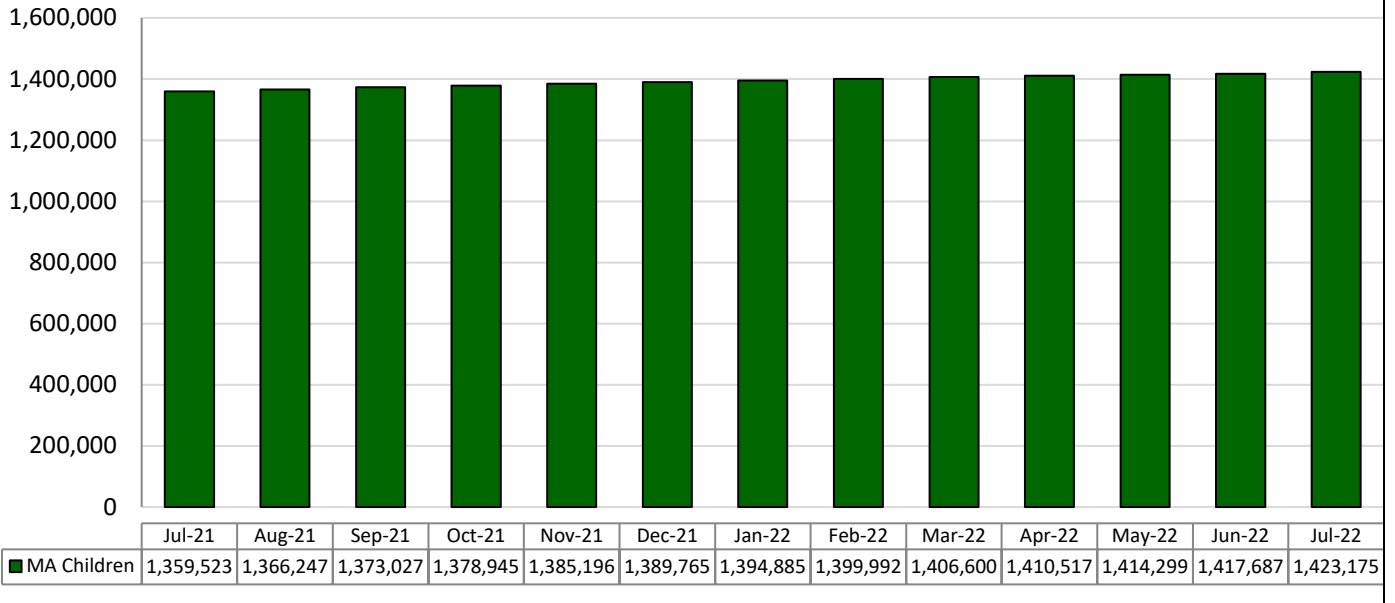
MEDICAL ASSISTANCE AND OTHER HEALTH CARE SERVICES



Data Source: DHS ListServ

NOTE: MA numbers now reflect data pulled on the second Tuesday of the month after the reported month. Previous months are not updated to show retroactive eligibility.

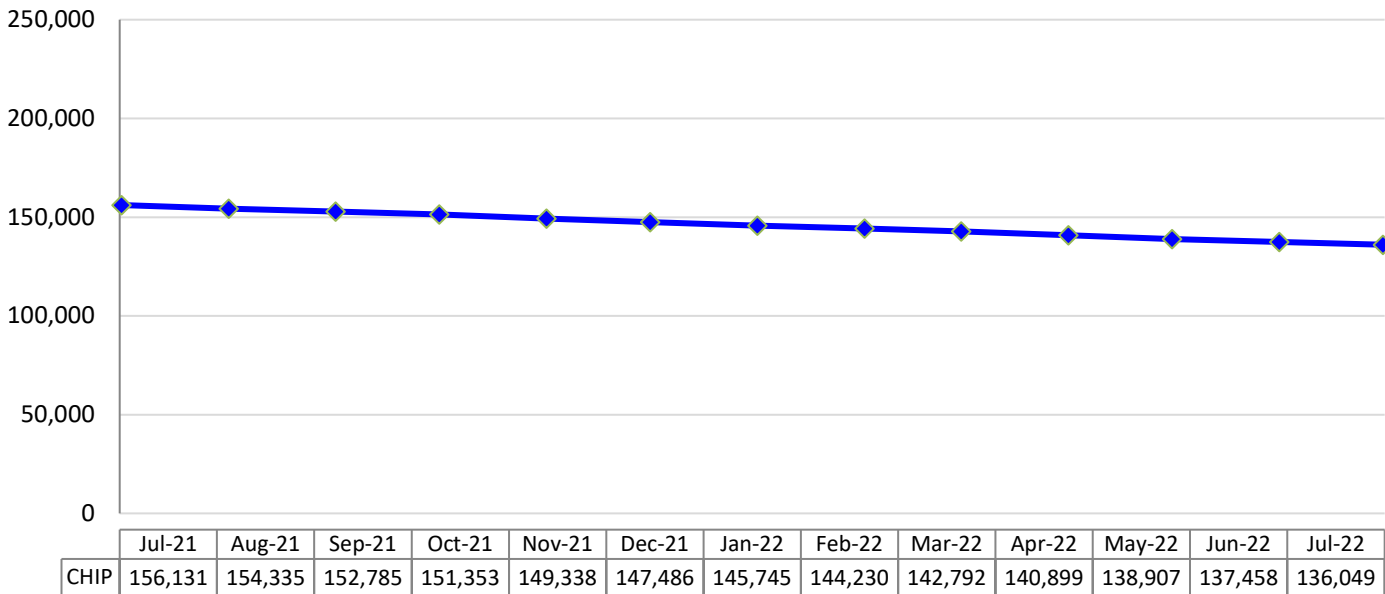
MA Children Preliminary Estimates ("children" can include persons up to 21 years old)



Data Source: DHS Data Enterprise Warehouse

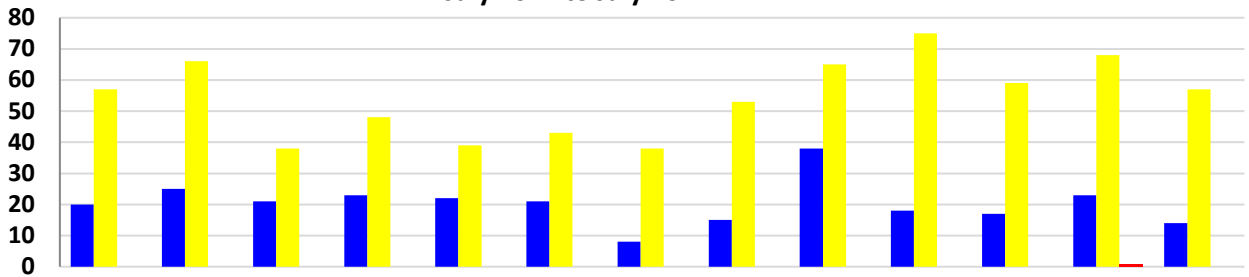
Note: Children are those recipients under the age of 21. (EC (eligible child) is no longer used for determining MA children).

Children's Health Insurance Program (CHIP) Enrollment 13% Decrease in CHIP Enrollment From July 2021 to July 2022



Data Source: DHS Data Enterprise Warehouse

State Hospital Admissions
8% Decrease in State Hospital Admissions from
July 2021 to July 2022



	Jul-21	Aug-21	Sep-21	Oct-21	Nov-21	Dec-21	Jan-22	Feb-22	Mar-22	Apr-22	May-22	Jun-22	Jul-22
■ Civil	20	25	21	23	22	21	8	15	38	18	17	23	14
■ Forensic	57	66	38	48	39	43	38	53	65	75	59	68	57
■ Long Term Care	0	0	0	0	0	0	0	0	0	0	0	1	0

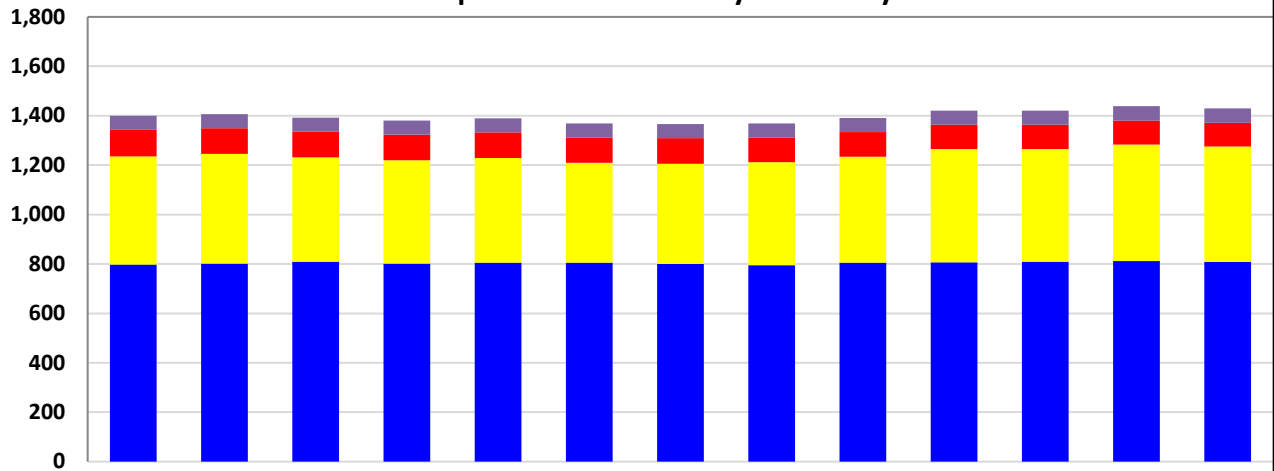
Data Source: Patient Census Information System

Civil: Unduplicated count of civil admissions of patients during the reporting month to: Clarks Summit State Hospital, Danville State Hospital, Norristown State Hospital, Torrance State Hospital, Warren State Hospital and Wernersville State Hospital.

Forensic: Unduplicated count of forensic admissions of patients during the reporting month to: Norristown State Hospital and Torrance State Hospital forensic units.

Long Term Care: Unduplicated count of admissions of patients during the reporting period to: South Mountain Restoration Center.

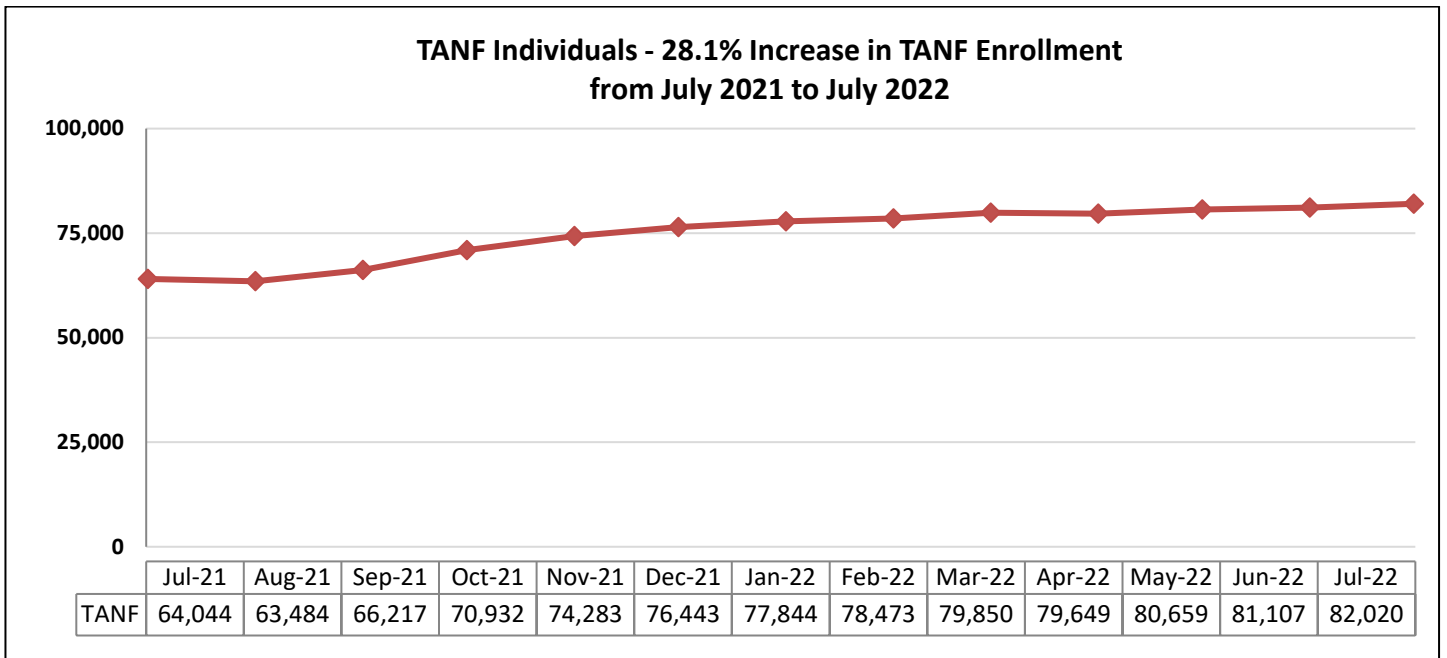
State Hospitals Census
2% Increase in State Hospital Census from July 2021 - July 2022



	Jul-21	Aug-21	Sep-21	Oct-21	Nov-21	Dec-21	Jan-22	Feb-22	Mar-22	Apr-22	May-22	Jun-22	Jul-22
■ Act 21	57	57	57	57	57	57	57	57	57	57	57	58	58
■ Long Term Care	107	104	104	103	103	103	103	100	100	99	98	98	97
■ Forensic	438	444	422	419	423	403	406	417	429	458	456	471	467
■ Civil	798	802	809	801	806	806	800	795	805	807	809	812	808

Data Source: Patient Census Information System

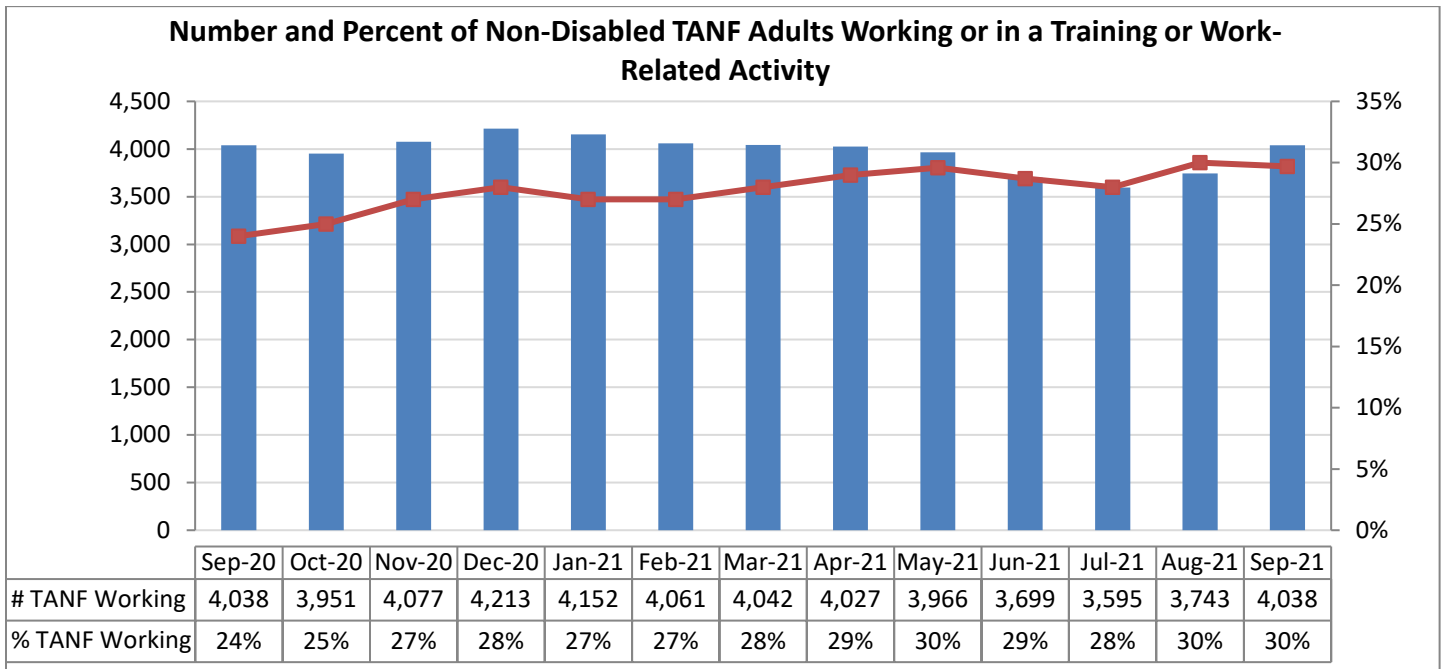
BENEFIT ASSISTANCE PROGRAMS FOR CHILDREN AND FAMILIES



Data Source: DHS ListServ/EDW

NOTE: TANF numbers now reflect data pulled on the second Tuesday of the month after the reported month.

*Increase in May 2020 of 10,493 persons are from the EAP. (Emergency Assistance Program). June 2020 includes 2,644 persons from EAP.

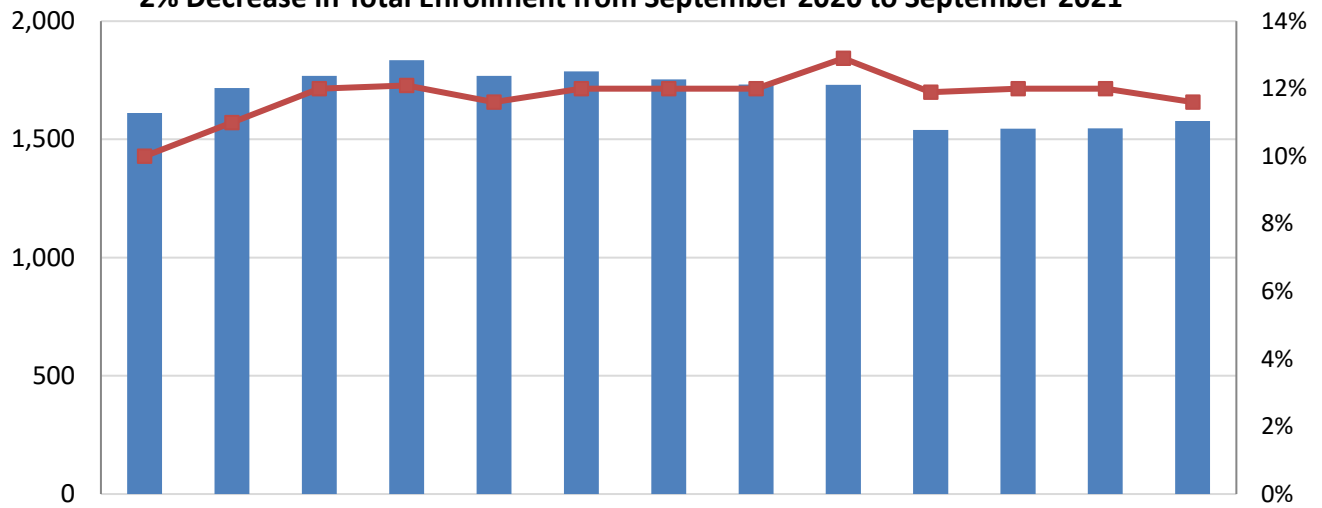


Data Source: AIS32W Report

*Data has been updated to count only those with open cases

*February 2020 data missing due to system update.

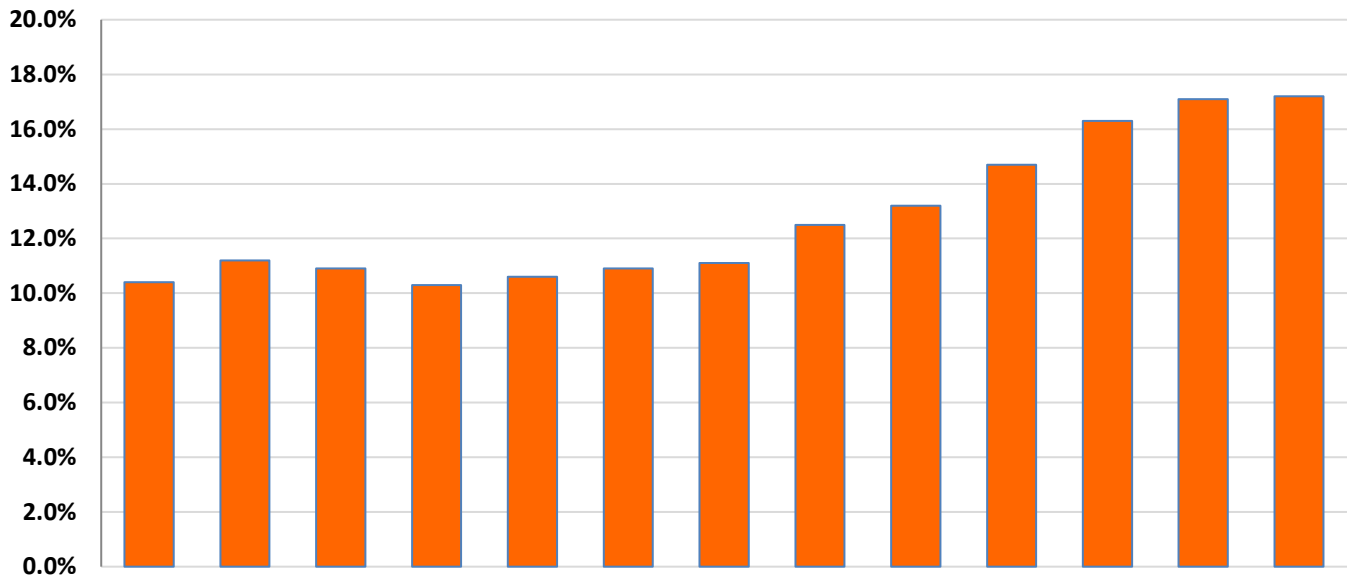
**Number of Non-disabled TANF Adults Working or in a Training Activity or Work-related Activity 20 Hours or More per Week -
2% Decrease in Total Enrollment from September 2020 to September 2021**



	Sep-20	Oct-20	Nov-20	Dec-20	Jan-21	Feb-21	Mar-21	Apr-21	May-21	Jun-21	Jul-21	Aug-21	Sep-21
# 20 Hrs/Wk	1,612	1,717	1,768	1,835	1,769	1,788	1,754	1,732	1,731	1,540	1,545	1,547	1,578
% 20Hrs/Wk	10%	11%	12%	12%	12%	12%	12%	12%	13%	12%	12%	12%	12%

Data Source: AIS32W Report

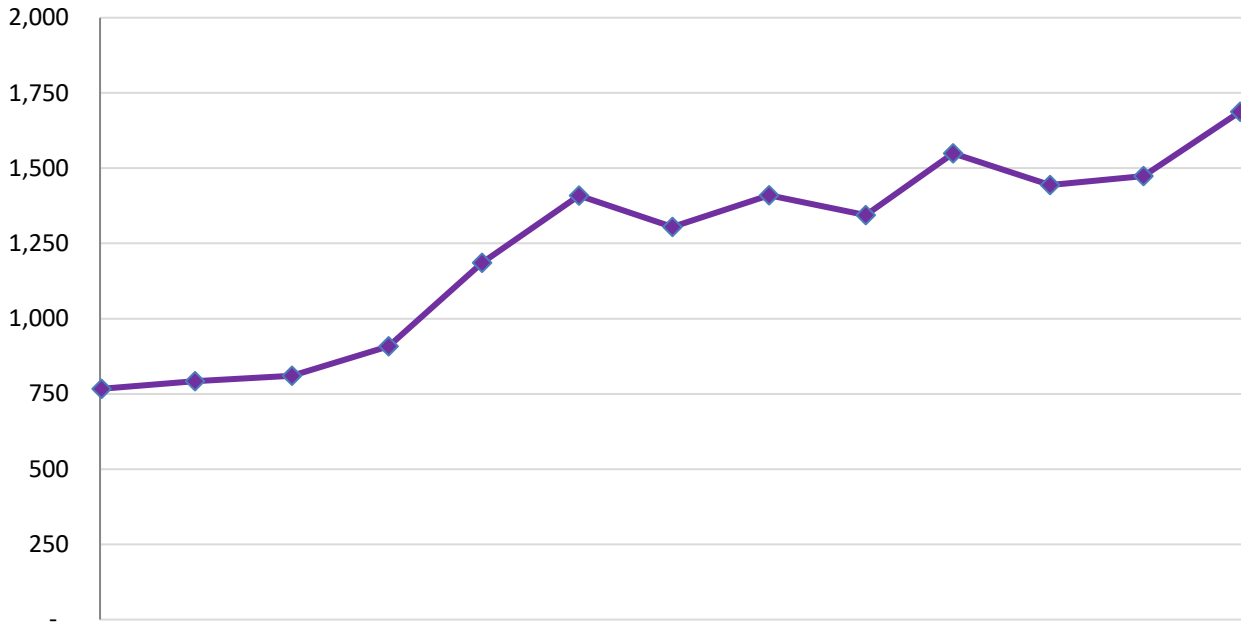
Pennsylvania Estimated TANF Workforce Participation Rate



	Jun-21	Jul-21	Aug-21	Sep-21	Oct-21	Nov-21	Dec-21	Jan-22	Feb-22	Mar-22	Apr-22	May-22	Jun-22
TANF WPR	10.4%	11.2%	10.9%	10.3%	10.6%	10.9%	11.1%	12.5%	13.2%	14.7%	16.3%	17.1%	17.2%

Data Source: TNF22 Report

**TANF Individuals that Obtain Employment
120% Increase from June 2021 to June 2022**

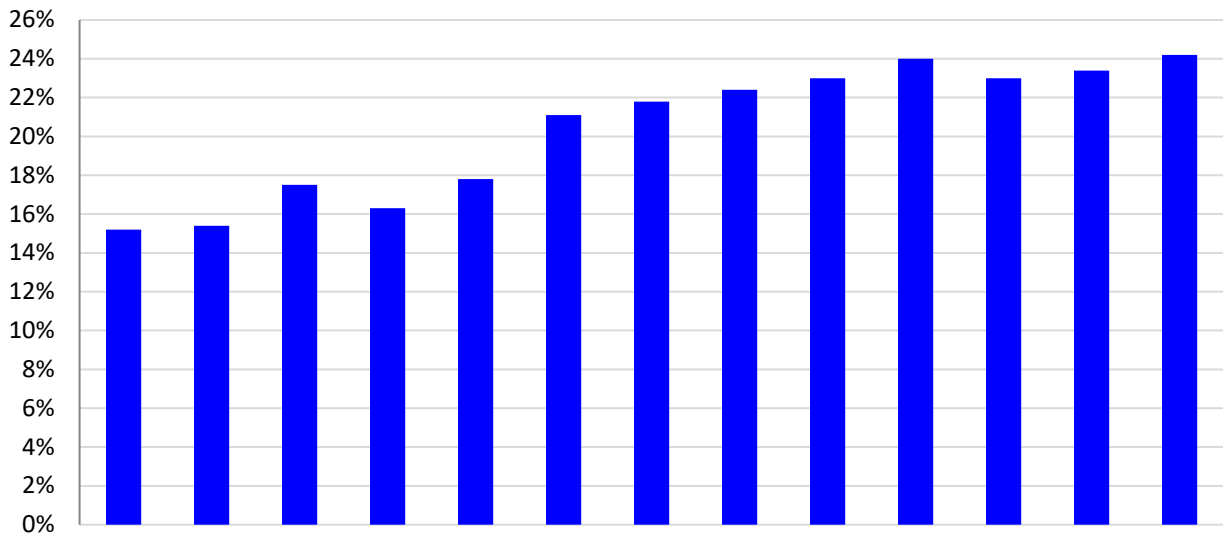


	Jun-21	Jul-21	Aug-21	Sep-21	Oct-21	Nov-21	Dec-21	Jan-22	Feb-22	Mar-22	Apr-22	May-22	Jun-22
TANF Employment	767	792	810	908	1,186	1,409	1,305	1,410	1,344	1,549	1,444	1,474	1,688

DHS Data Enterprise Warehouse

A budget is one or more related or unrelated individuals who occupy a common residence or would occupy a common residence if they were not homeless, and whose needs are considered together in determining eligibility for assistance are considered together in determining eligibility for assistance under one category of assistance.

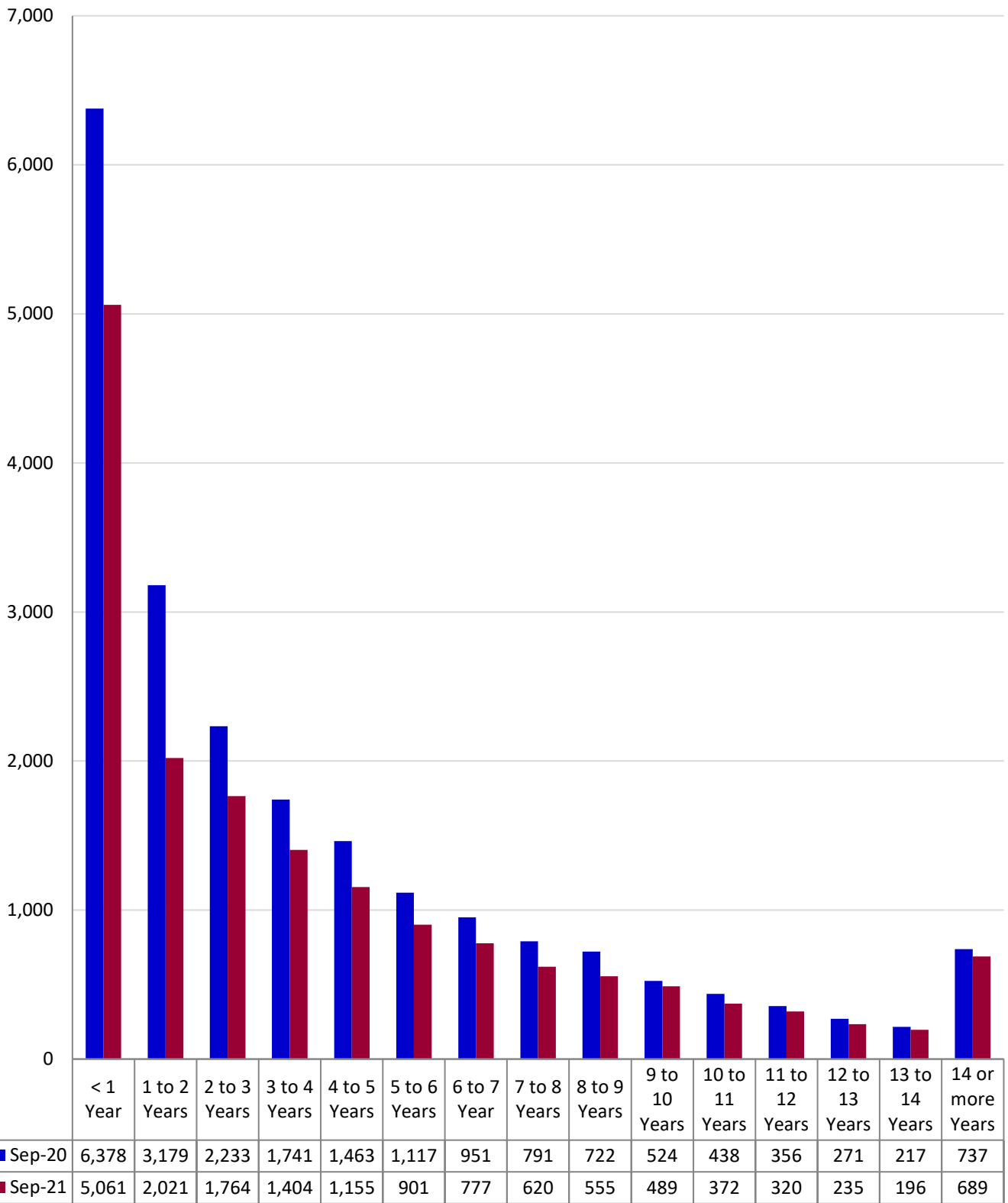
TANF Budgets Leaving for Employment as Percent of All Budgets that Left TANF



	Jun-21	Jul-21	Aug-21	Sep-21	Oct-21	Nov-21	Dec-21	Jan-22	Feb-22	Mar-22	Apr-22	May-22	Jun-22
TANF Employment	15%	15%	18%	16%	18%	21%	22%	22%	23%	24%	23%	23%	24%

DHS Data Enterprise Warehouse

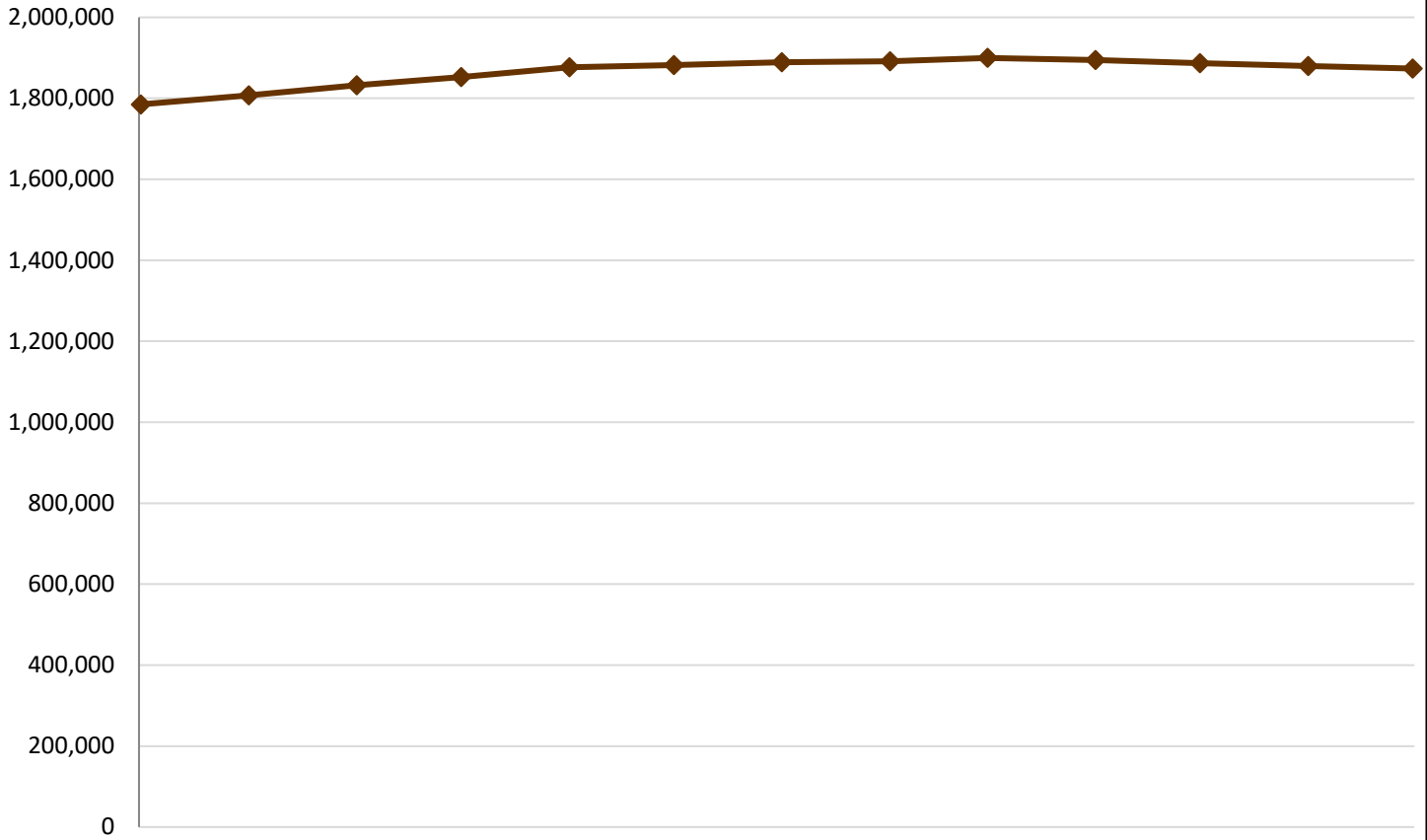
Adults on TANF by Length of Time



Data Source: AIS32W File

Note: Total time on TANF is cumulative, not subsequent (i.e., as a person moves on and off TANF, each time they are on will add to their total), and also includes time spent on TANF as a child.

SNAP Eligible Persons
5% Increase in SNAP Enrollment from July 2021 to July 2022

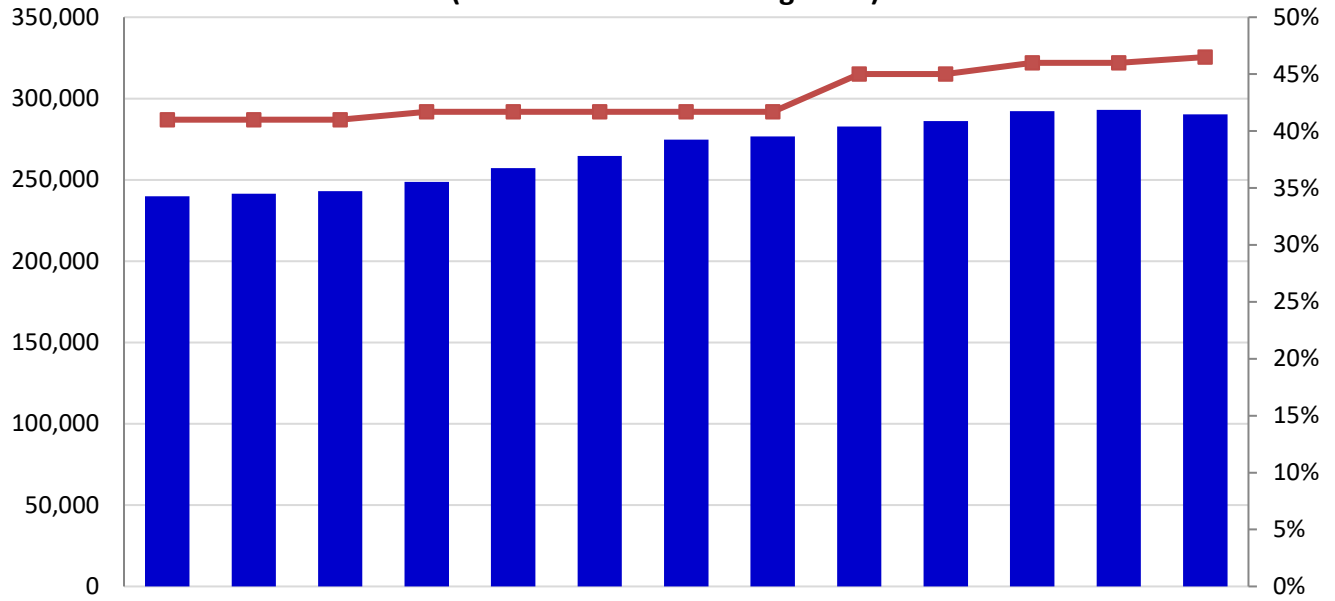


	Jul-21	Aug-21	Sep-21	Oct-21	Nov-21	Dec-21	Jan-22	Feb-22	Mar-22	Apr-22	May-22	Jun-22	Jul-22
SNAP	1,785,032	1,807,008	1,832,616	1,852,173	1,876,724	1,882,327	1,889,440	1,891,754	1,899,689	1,894,740	1,886,660	1,880,071	1,873,811

Data Source: DHS ListServ/EDW

NOTE: SNAP numbers now reflect data pulled on the second Tuesday of the month after the reported month.

Number and Percent of Non-disabled SNAP Adults Working (Excludes Those Receiving TANF)*

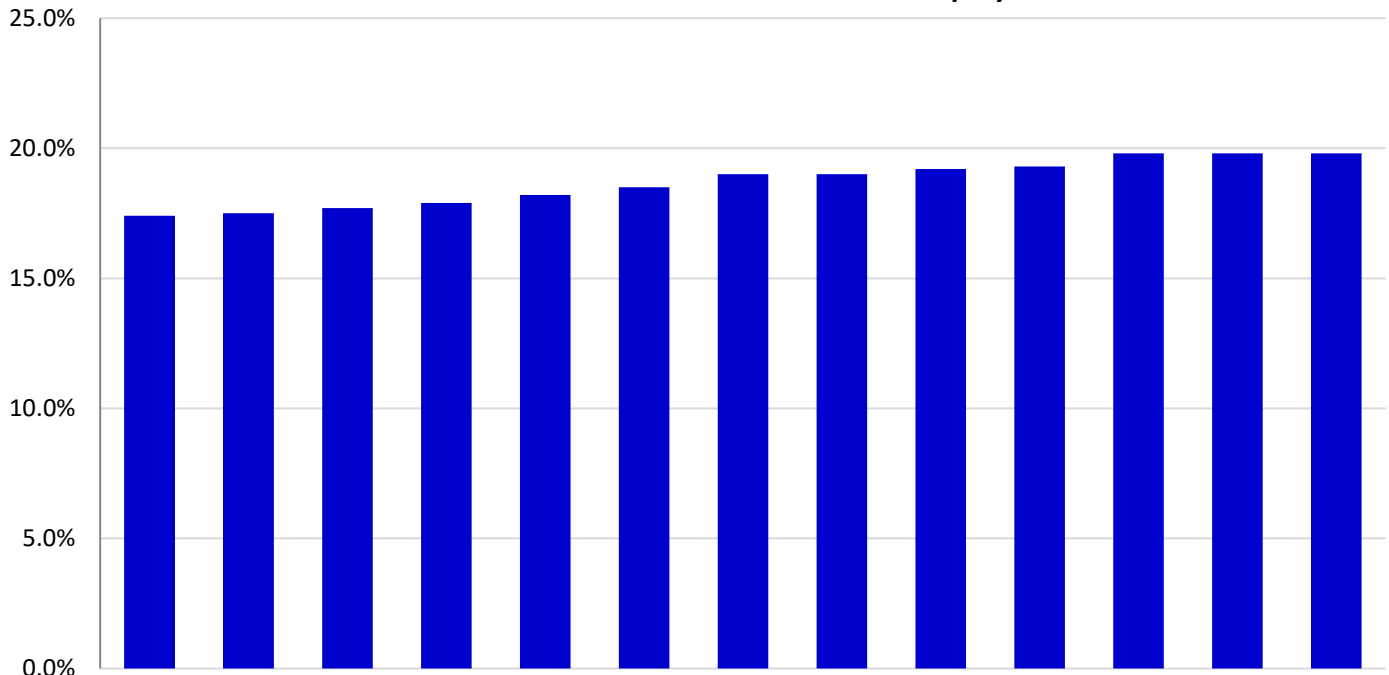


	May-21	Jun-21	Jul-21	Aug-21	Sep-21	Oct-21	Nov-21	Dec-21	Jan-22	Feb-22	Mar-22	Apr-22	May-22
# SNAP Working	239,998	241,506	243,102	248,720	257,291	264,737	274,737	276,626	282,792	286,210	292,308	292,973	290,258
% SNAP Working	41%	41%	41%	42%	42%	42%	42%	42%	45%	45%	46%	46%	47%

*Beginning in Jan 2018, SNAP Adults working includes non-elderly only.

Data Source: DHS Enterprise Data Warehouse

Percent of Non-disabled SNAP Adults with Full-time Employment*

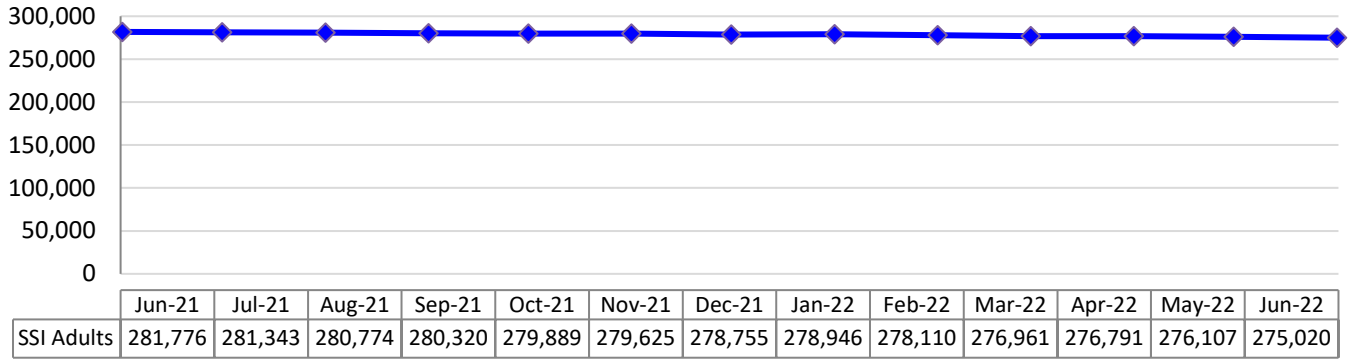


	May-21	Jun-21	Jul-21	Aug-21	Sep-21	Oct-21	Nov-21	Dec-21	Jan-22	Feb-22	Mar-22	Apr-22	May-22
% SNAP Working	17.4%	17.5%	17.7%	17.9%	18.2%	18.5%	19.0%	19.0%	19.2%	19.3%	19.8%	19.8%	19.8%

*Full-time status according to CIS Employment Status Code

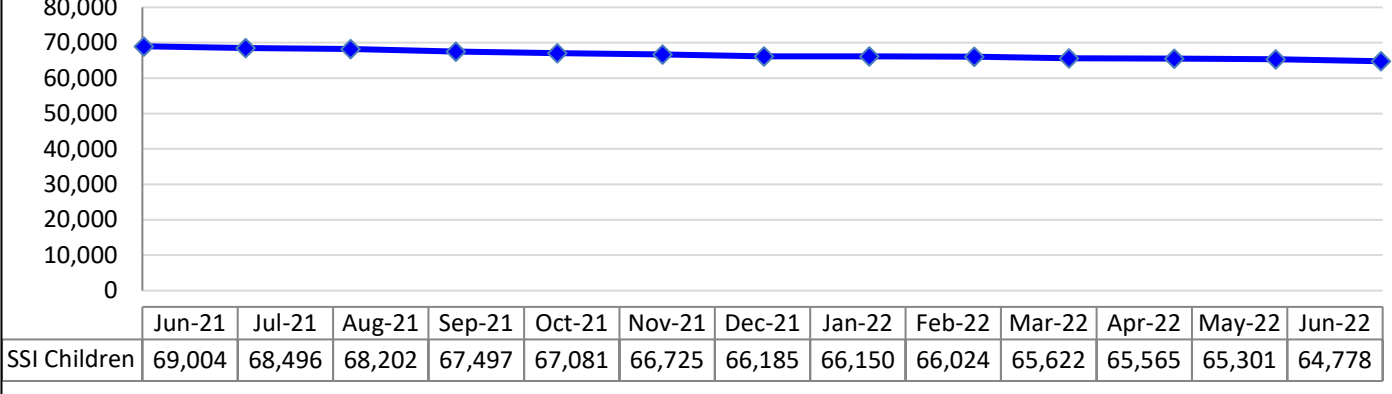
Data Source: DHS Enterprise Data Warehouse

**SSI Adults -- 2.4% Decrease in Total Adult SSI Enrollment
from June 2021 to June 2022**



Data Source: DHS Enterprise Data Warehouse

**SSI Children -- 6.1% Decrease in Total Child SSI Enrollment
from June 2021 to June 2022**



Data Source: DHS Enterprise Data Warehouse

Child Support Measures

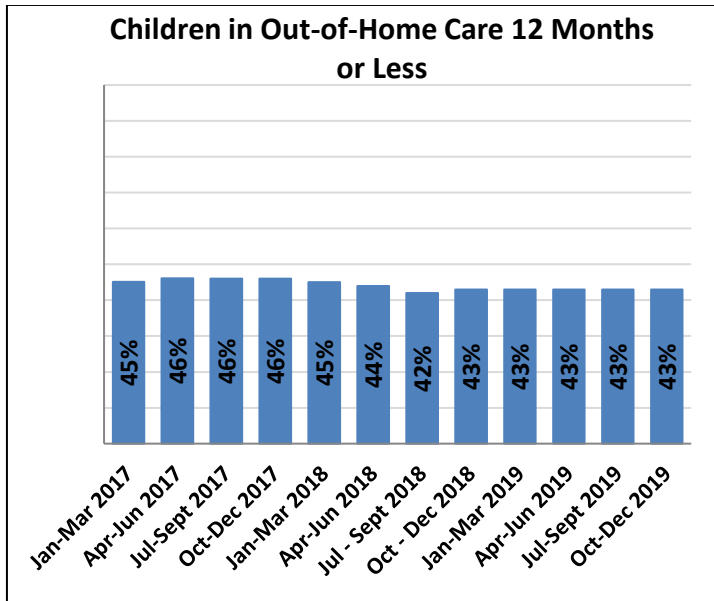
Child Support	Federal Target	Pennsylvania Rate												
		Jun 2021	Jul 2021	Aug 2021	Sept 2021	Oct 2021	Nov 2021	Dec 2021	Jan 2022	Feb 2022	Mar 2022	Apr 2022	May 2022	Jun 2022
Child Support - Cases with Paternity Establishments**	80%	103%	105%	106%	107%	95%	96%	96%	97%	98%	100%	101%	100%	100%
Child Support - Current Supports Collected	80%	84%	84%	84%	84%	82%	82%	82%	84%	81%	82%	82%	82%	82%
Child Support - Percent of Cases Paying Arrears	80%	84%	85%	86%	86%	42%	52%	60%	66%	68%	74%	76%	78%	78%
Cases with Orders	80%	91%	91%	91%	91%	91%	91%	91%	90%	90%	90%	90%	91%	90%
Cost Effectiveness (FFY)	\$5.00	FFY 2018-19: \$4.78			FFY 2019-20: \$4.49			FFY 2020-21: \$5.13			FFY 2020-21: \$5.13		FFY 2021-22: \$5.13	

*Drop from September to October due to starting of new Federal Fiscal Year (compare with previous year) Data Source: OCSE Reports

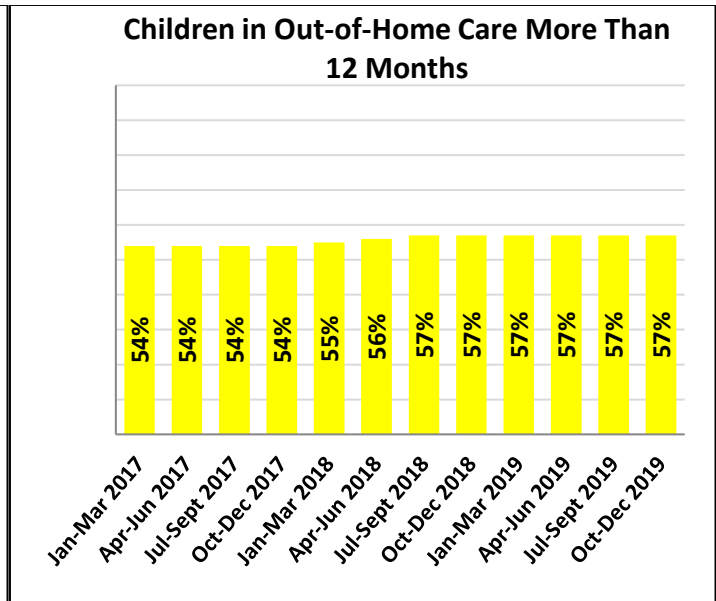
CHILD WELFARE SERVICES

Category: YDC/YFC's	Current	Average
Monthly Admissions	27 (July 2022)	Rolling Year Average 28 (Aug 2021 – Jul 2022)
Level of Improvement in Life Skills from Intake to Discharge for all YDC/YFC participants completing program	16.3% (July 2022)	Rolling Year Average 11% (Aug 2021 – Jul 2022)

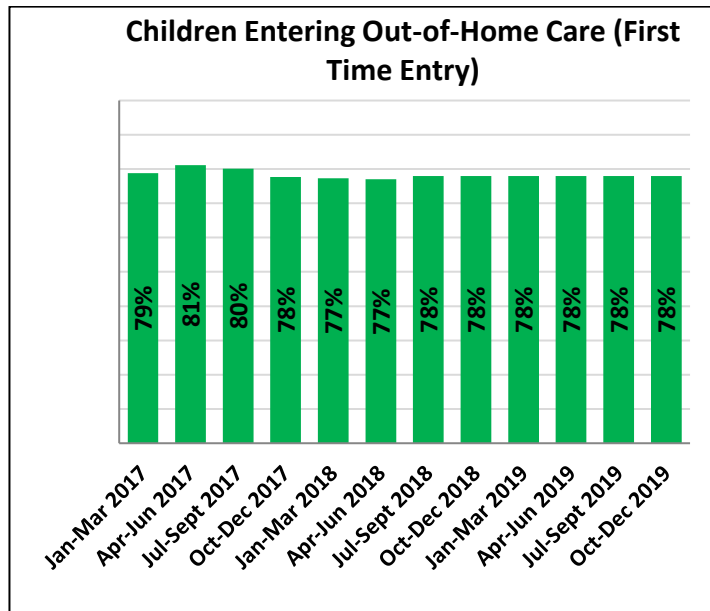
Data Source: Automatic Intake and Incident Reporting System (admissions); Ansell-Casey Life Skills Assessment (life skills)

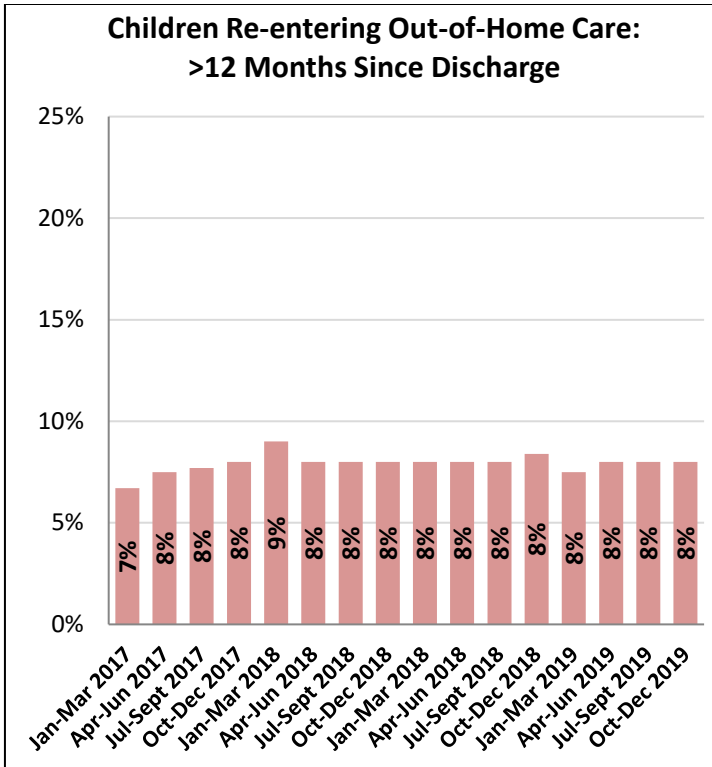


Data Source: AFCARS

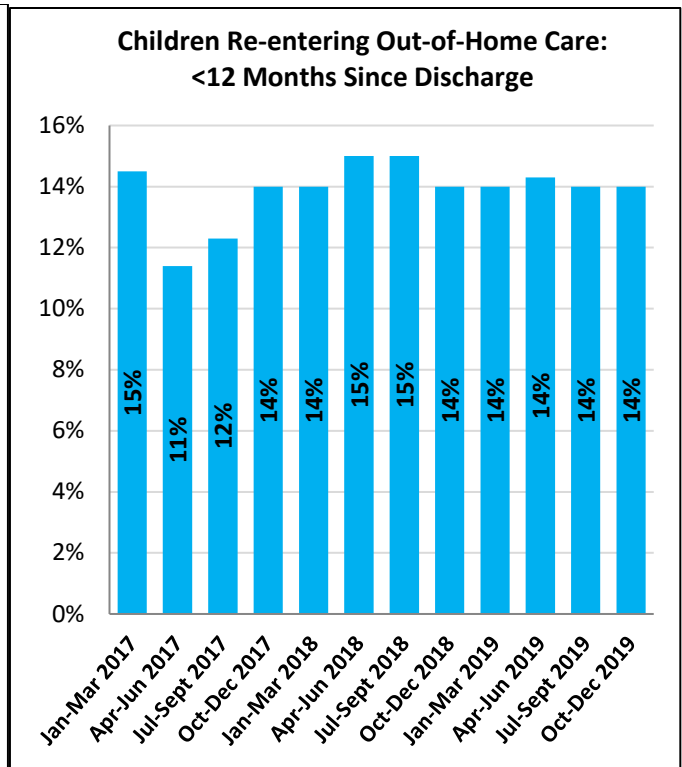


Data Source: AFCARS

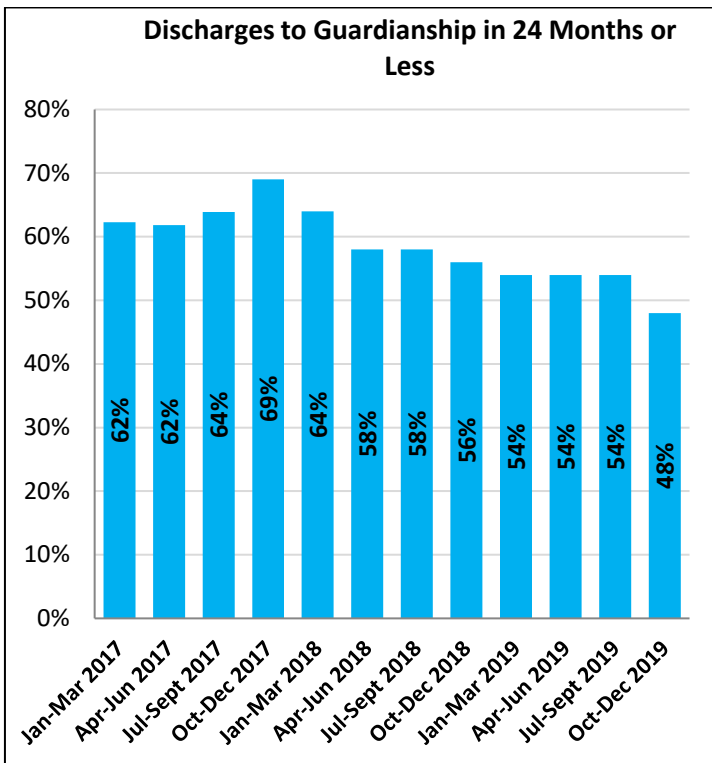




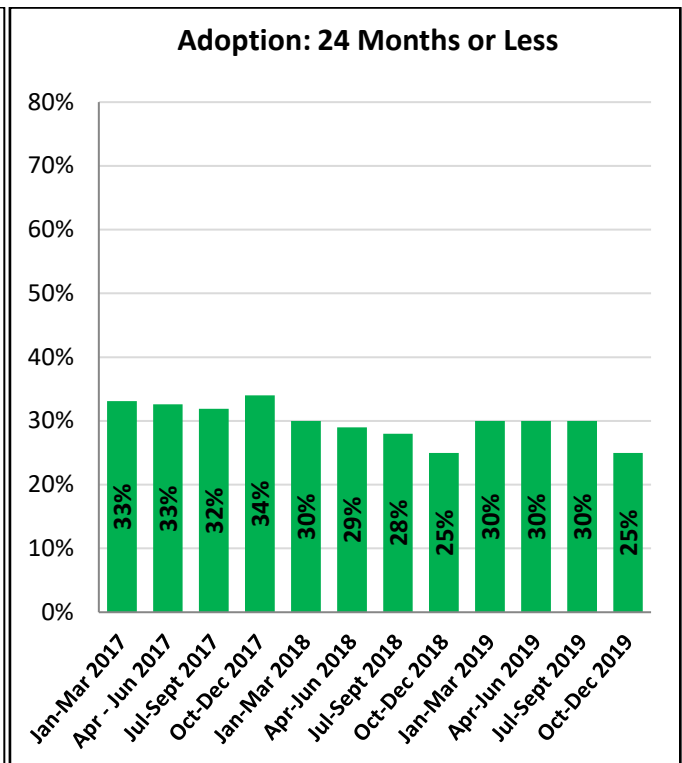
Data Source: AFCARS



Data Source: AFCARS

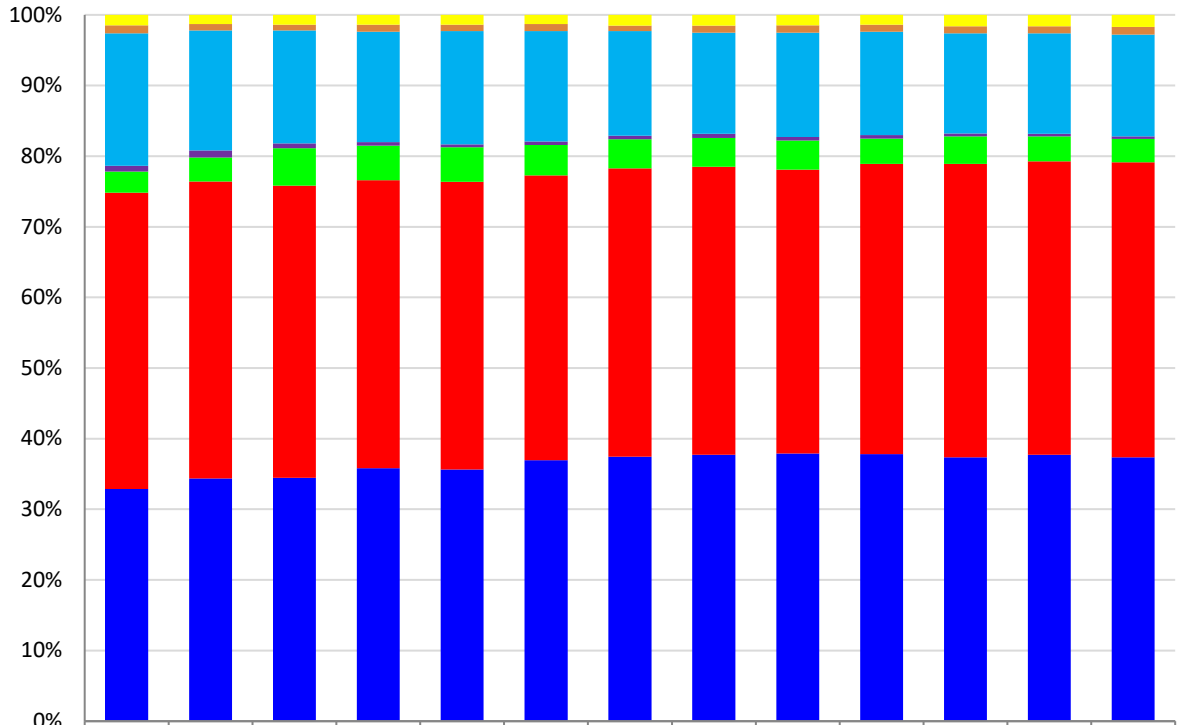


Data Source: AFCARS



Data Source: AFCARS

Child Welfare: Settings of Children in Care



	Jan - Mar 2016	Apr - Jun 2016	Jul - Sept 2016	Oct - Dec 2016	Jan - Mar 2017	Apr - Jun 2017	Jul - Sept 2017	Oct - Dec 2017	Jan - Mar 2018	Apr - June 2018	Jul - Sep 2018	Oct - Dec 2018	Jan - Mar 2019
Supervised IL	248	215	222	223	230	216	252	249	249	235	264	259	276
Runaway Status	182	149	127	159	148	166	134	166	166	168	165	162	179
Residential	3,104	2,807	2,540	2,481	2,628	2,588	2,487	2,370	2,453	2,454	2,341	2,302	2,341
Trial Home Visit	132	165	111	80	66	83	84	99	83	84	66	65	65
Pre-adoptive Home	495	561	842	779	805	713	689	679	679	605	643	567	536
Foster Family - Non-Relative	6,934	6,951	6,573	6,490	6,685	6,687	6,857	6,745	6,662	6,909	6,858	6,728	6,795
Foster Family - Relative	5,432	5,679	5,478	5,694	5,847	6,122	6,286	6,248	6,281	6,355	6,165	6,112	6,080

"Supervised Independent Living" = those in an alternative transitional living arrangement where the child is under the supervision of the agency but without 24 hour adult supervision, is receiving financial support from the child welfare agency, and is in a setting which provides the opportunity for increased responsibility for self care.

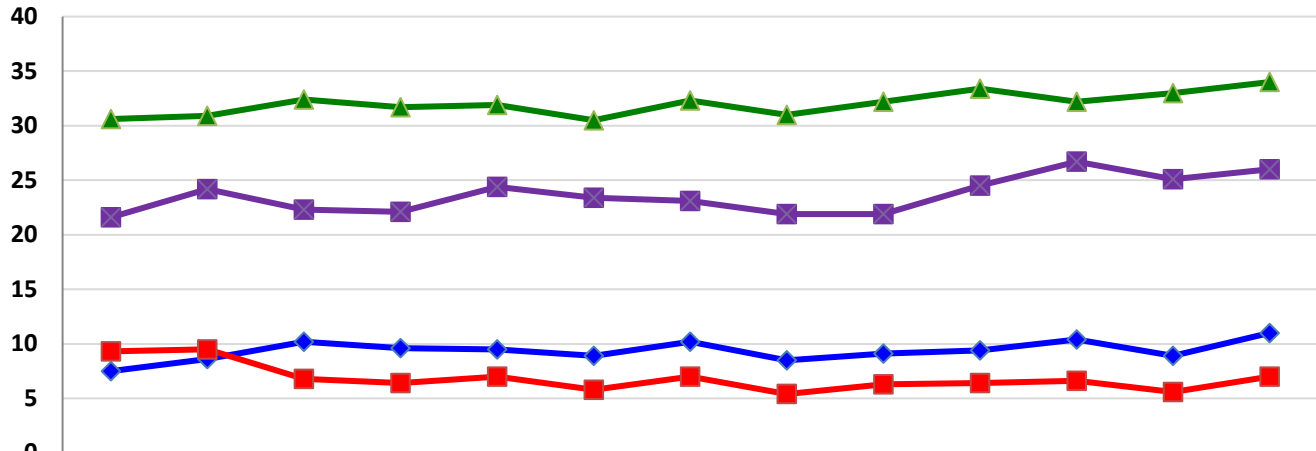
"Runaway" = those who have run away from the foster care setting.

"Residential Setting" = those placed in a group home or institution

"Home Setting" = those placed in pre-adoptive homes, Family Foster Home-relative, Family Foster Home-non-relative and trial home visits.

Data Source: AFCARS

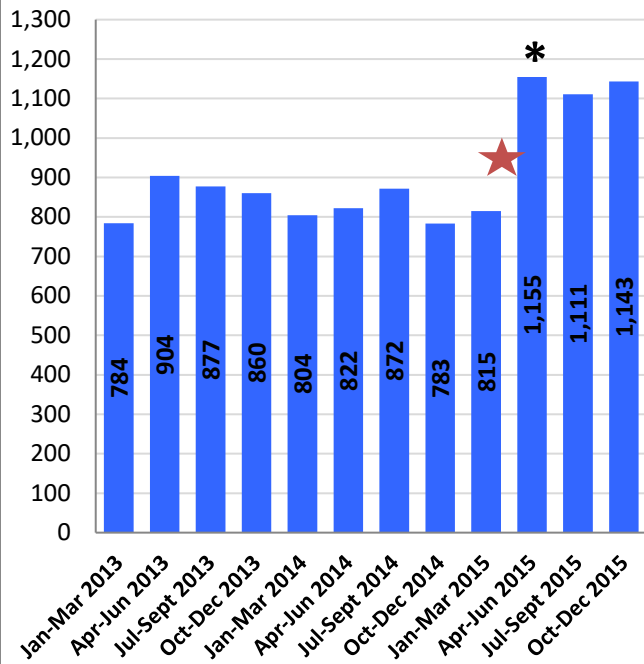
Average Number of Months from Latest Removal from Home to Permanency Category



	Jan-Mar 2016	Apr-Jun 2016	Jul-Sept 2016	Oct-Dec 2016	Jan-Mar 2017	Apr-Jun 2017	Jul-Sept 2017	Oct-Dec 2017	Jan-Mar 2018	Apr-Jun 2018	Jul-Sept 2018	Oct-Dec 2018	Jan-Mar 2019
Reunification	8	9	10	10	10	9	10	9	9	9	10	9	11
Kinship Care	9	10	7	6	7	6	7	5	6	6	7	6	7
Adoption	31	31	32	32	32	31	32	31	32	33	32	33	34
Guardianship	22	24	22	22	24	23	23	22	22	25	27	25	26

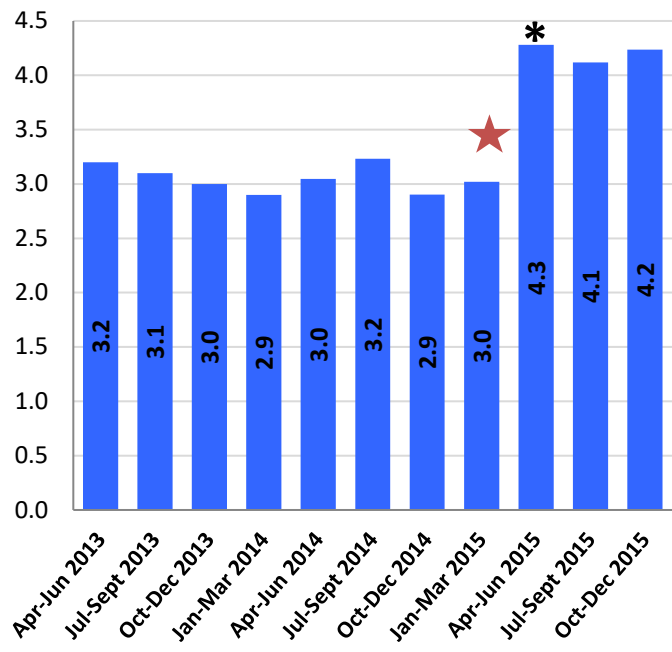
Data Source: AFCARS

Substantiated Reports of Child Abuse/Neglect in PA



Data Source: Childline

Rate per 10,000 Children of Substantiated Reports of Child Abuse/Neglect in PA



Data Source: Childline

* Increase due to new statutes requiring County Child Welfare agencies to complete an investigation and submit outcomes within 60 days.

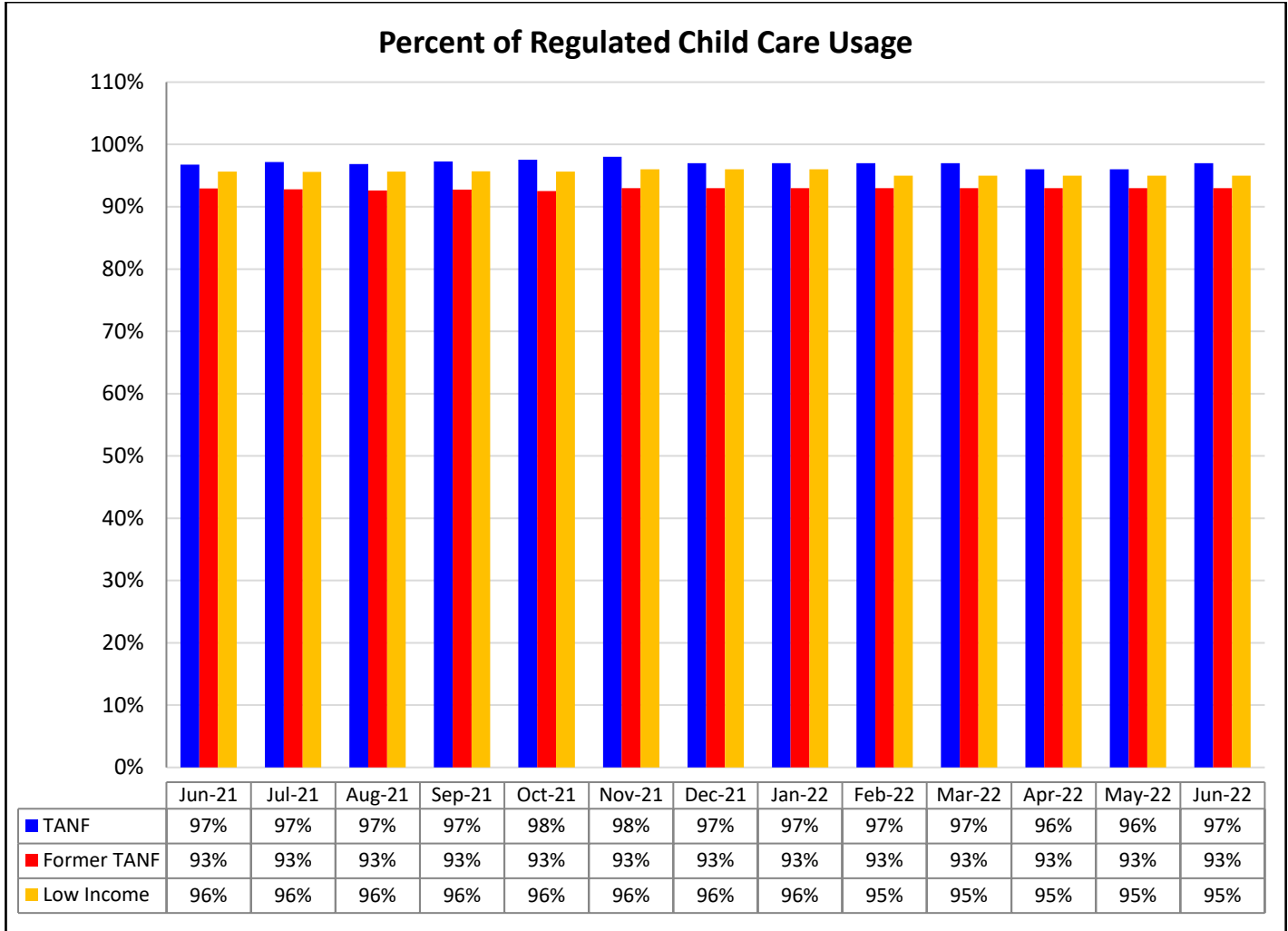
★ Data for January-March quarter is incomplete due to data conversion to new system

CHILD CARE AND EARLY LEARNING SERVICES

Child Care Subsidies	Number of Children Receiving* (June 2022)	Encumbrance (June 2022)	# on Waiting List (December 2021)
TANF	4,542	99%	0
Former TANF	14,457	54%	0
Low Income	64,804	84%	8

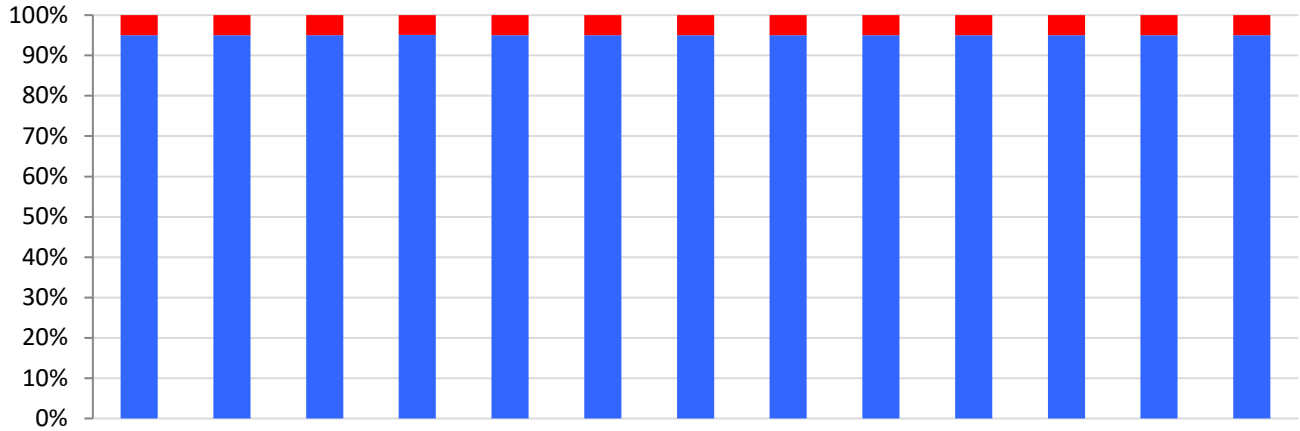
Data Sources: PELICAN CCW and PELICAN Child Care DW

*Preliminary Number – final number will be determined as additional data becomes available.



Data Source: PELICAN CCW

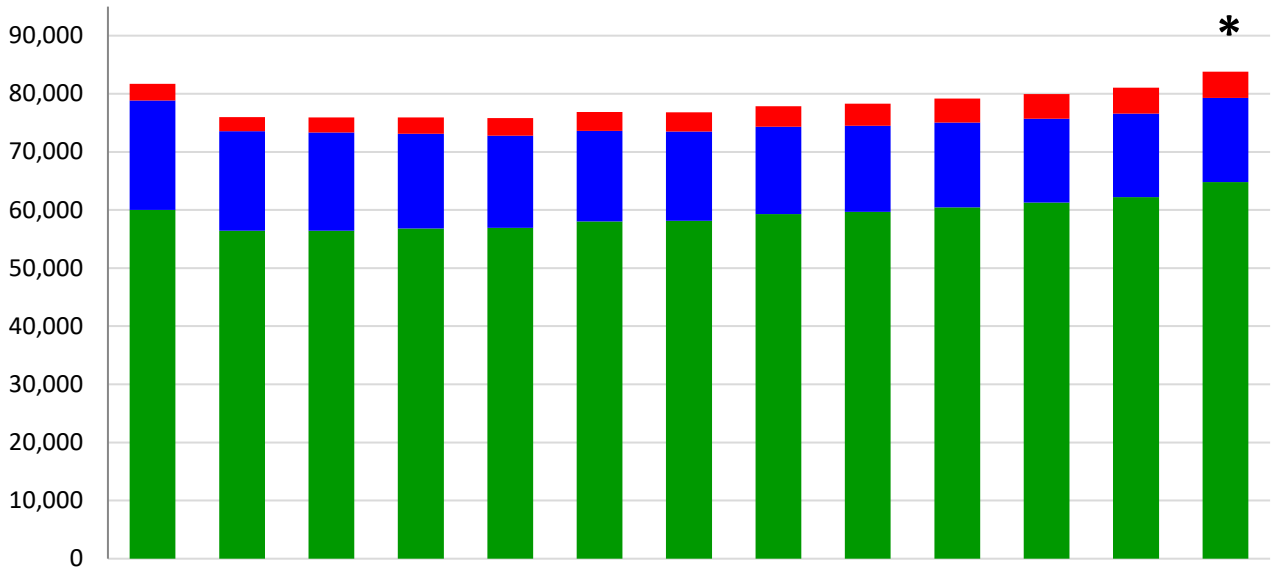
Percent of Children Receiving Subsidized Child Care in Regulated Versus Unregulated Settings



	Jun-21	Jul-21	Aug-21	Sep-21	Oct-21	Nov-21	Dec-21	Jan-22	Feb-22	Mar-22	Apr-22	May-22	Jun-22
Unregulated	5%	5%	5%	5%	5%	5%	5%	5%	5%	5%	5%	5%	5%
Regulated	95%	95%	95%	95%	95%	95%	95%	95%	95%	95%	95%	95%	95%

Data Source: PELICAN CCW

Children Receiving Subsidized Child Care

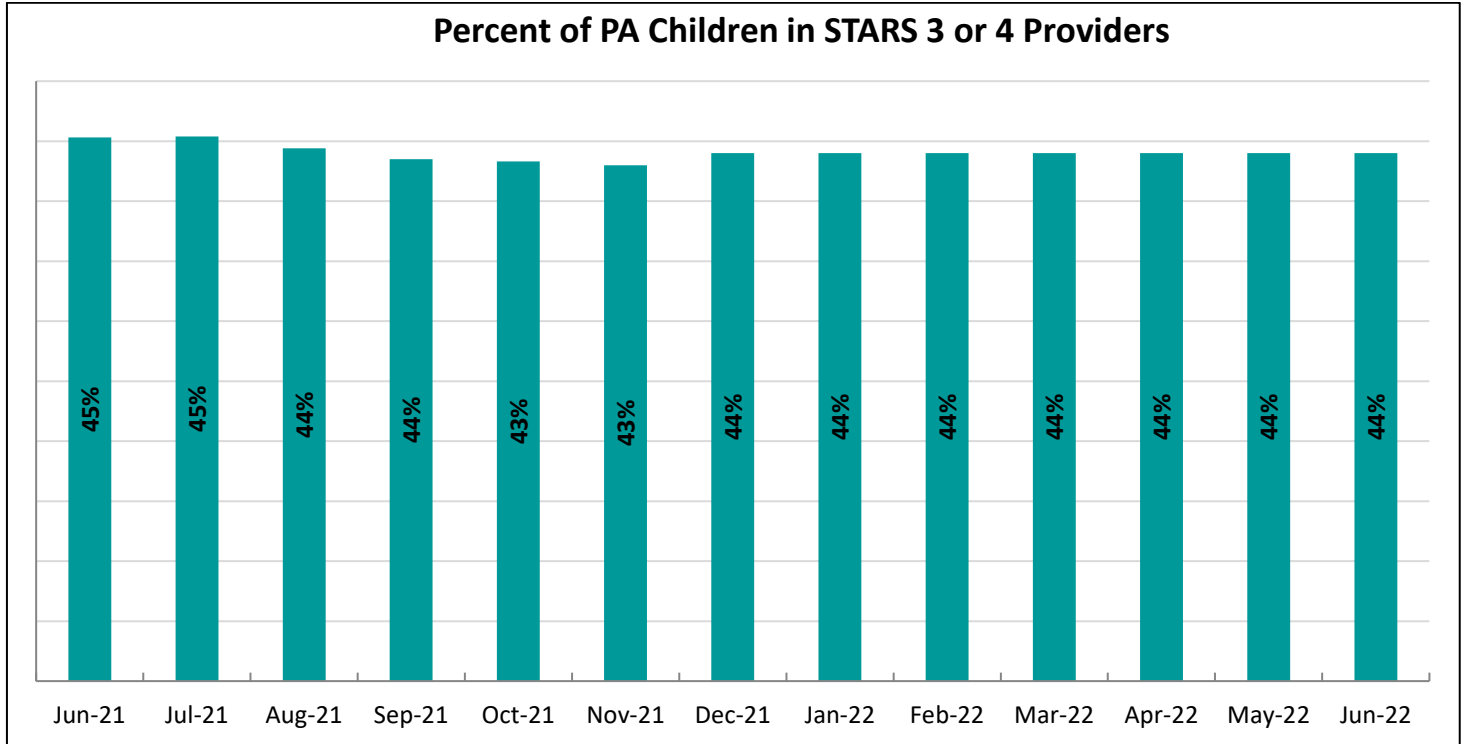


	Jun-21	Jul-21	Aug-21	Sep-21	Oct-21	Nov-21	Dec-21	Jan-22	Feb-22	Mar-22	Apr-22	May-22	Jun-22
TANF	2,866	2,462	2,616	2,805	3,057	3,241	3,288	3,499	3,778	4,095	4,247	4,461	4,542
Former TANF	18,847	17,121	16,857	16,340	15,845	15,629	15,354	15,016	14,800	14,590	14,420	14,370	14,457
Low Income	60,012	56,419	56,459	56,799	56,922	58,009	58,149	59,318	59,693	60,476	61,280	62,243	64,804

*Preliminary Numbers – final numbers will be determined as additional data becomes available Data Source: PELICAN CCW
 NOTE: Beginning July 2012, number of children being served has decreased due to correction of a contractor error where children on the waiting list were being counted as receiving services.

Keystone STARS	Current	Historical
% of Keystone STARS Providers at STAR 3 or STAR 4	26% (June 2022)	29% (May 2022)

Data Source: PELICAN KTQ



Data Source: PELICAN CCW

Infants, Toddlers, and Families Waiver and Early Intervention (0-3)	Current	Historical
Early Intervention Enrollment (1-day Count)	26,795 (June 2022)	26,549 (May 2022)
Early Intervention Enrollment (Unduplicated Total)	26,839 (June 2022)	26,579 (May 2022)
Waiver (Monthly Average)	2,629 (June 2022)	2,510 (May 2022)
Children Who Met EI Goals Prior to 3 rd Birthday	277 (26%) (June 2022)	268 (27%) (May 2022)

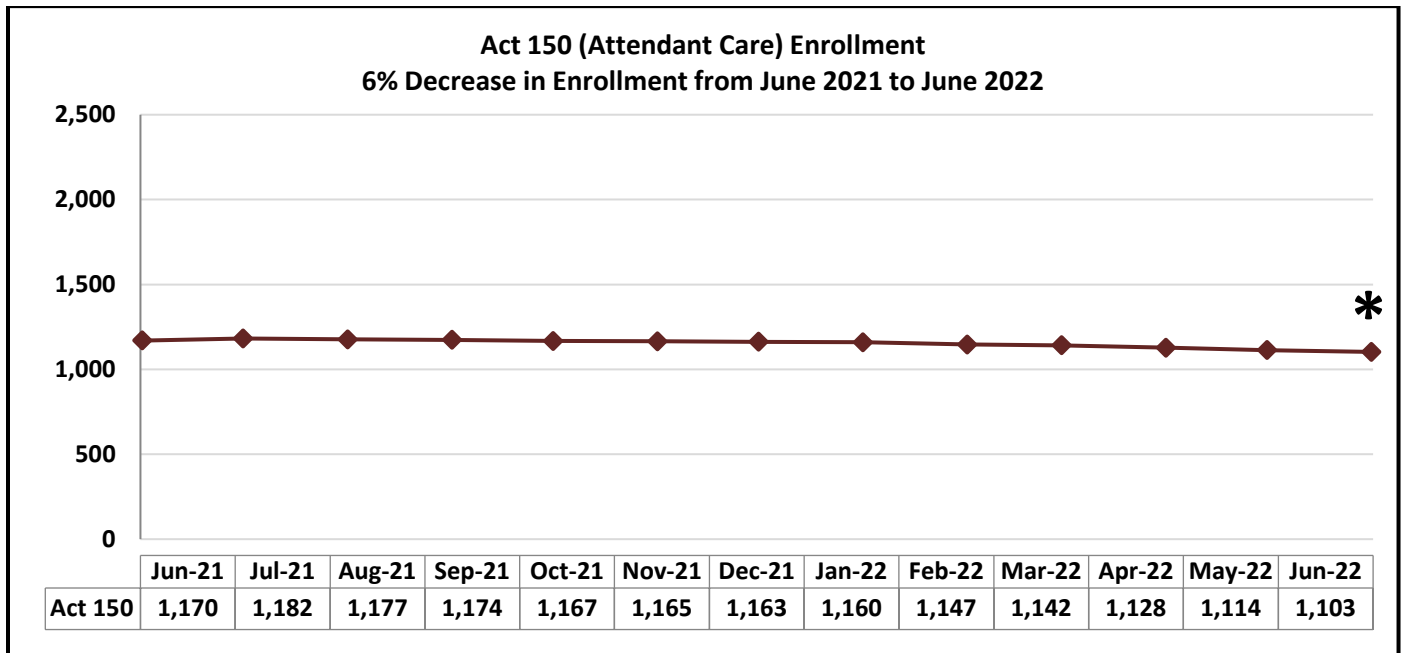
Data Sources: HCSIS DW, EI Ad Hoc Reporting Tool

Early Intervention Enrollment – The total number of children currently receiving services and supports through the EI program. The count of children (birth to three) who have a 25% delay in one or more of the following areas: cognitive development; physical development including vision and hearing; communication development; social or emotional development; or adaptive development.

ITF Waiver Enrollment – The total number of children currently receiving services and supports through the Infants, Toddlers, and Families Waiver. The count of children (birth to three) who are eligible for Medical Assistance, have a 50% delay in one area or 33% delay in two areas, and receive services in the home or a community setting.

Early Intervention Children Who Met EI Goals Prior to 3rd Birthday – Of children receiving early intervention services between the ages of zero and three, the number who meet their developmental goals by their 3rd birthday.

LONG TERM SUPPORTS FOR PERSONS WITH DISABILITIES AND OLDER PENNSYLVANIANS

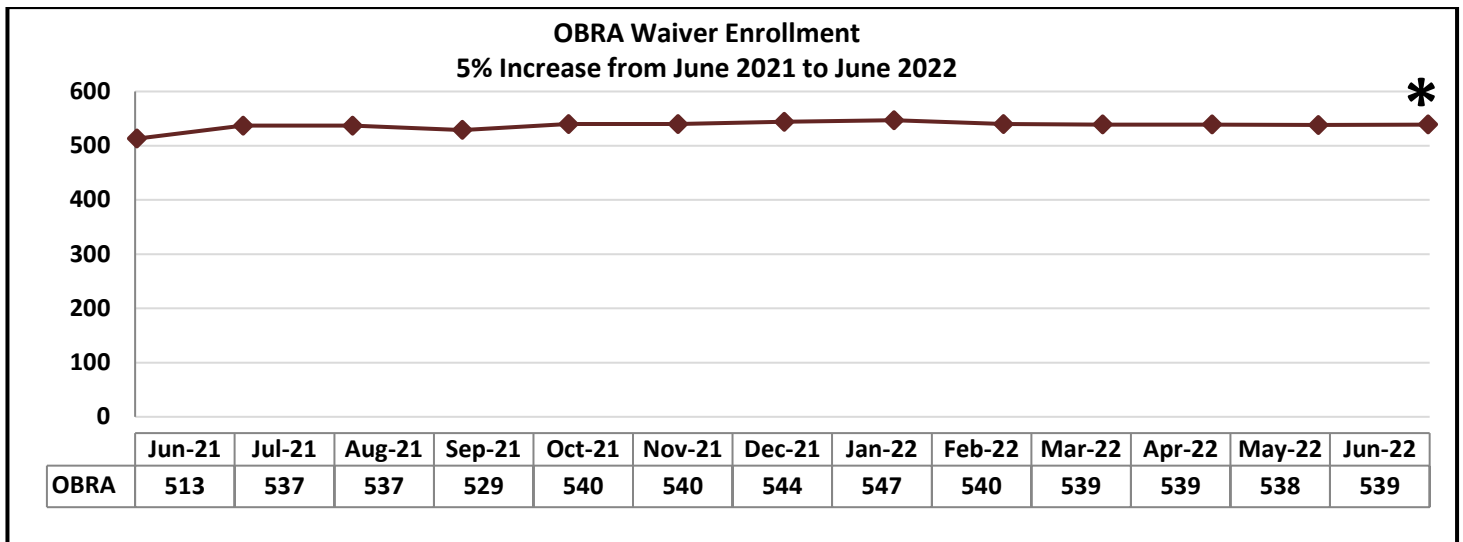


Source: DHS Enterprise Data Warehouse

***Preliminary Number – will be updated as additional data becomes available**

Data is for statewide Fee for Service enrollment only.

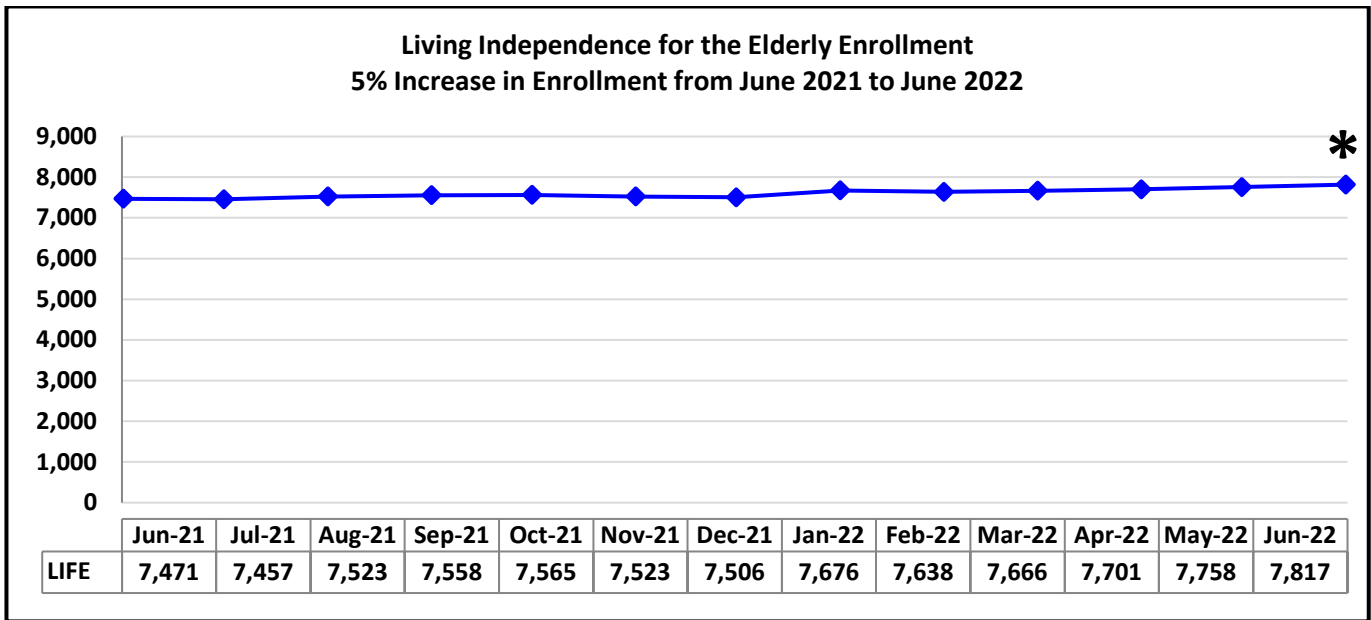
Point-in-time (last day of month) count of unduplicated participants with an Approved Service Plan in DHS’s case management system. The Act 150 provides service coordination, personal assistance and personal emergency response system to individuals with physical disabilities, age 18 through 59, who are mentally alert. This waiver also provides community transition services. This is a state funded program. Participants must be NFCE but are not financially eligible for Medicaid.



Source: DHS Enterprise Data Warehouse

***Preliminary Number – will be updated as additional data becomes available**

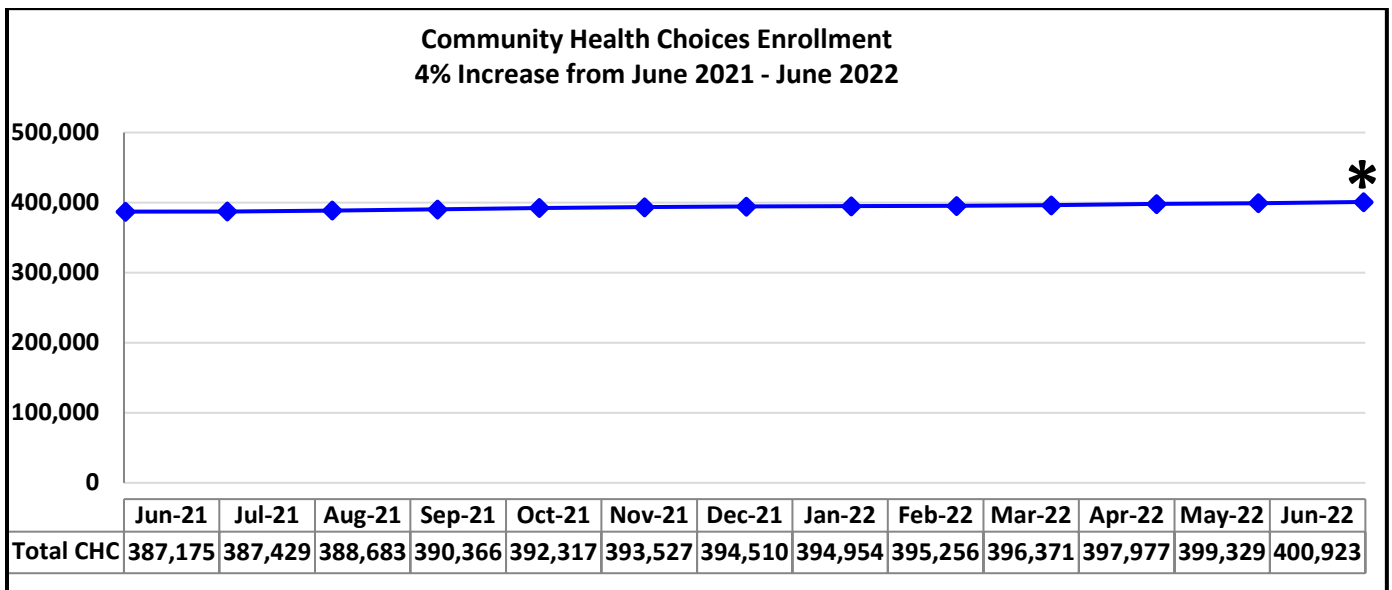
In December 2019, individuals in this waiver were reassessed and some were moved into the Community Health Choices Waiver. Point-in-time (last day of month) count of unduplicated participants with an Approved Service Plan in DHS’s case management system. This waiver provides services to recipients who have developmental physical disabilities which results in at least three substantial functional limitations, age 18 through 59; disability manifested prior to age 22, and the disability is expected to continue indefinitely; requires ICF/ORC level of care.



Source: DHS Enterprise Data Warehouse

***Preliminary Number – will be updated as additional data becomes available.**

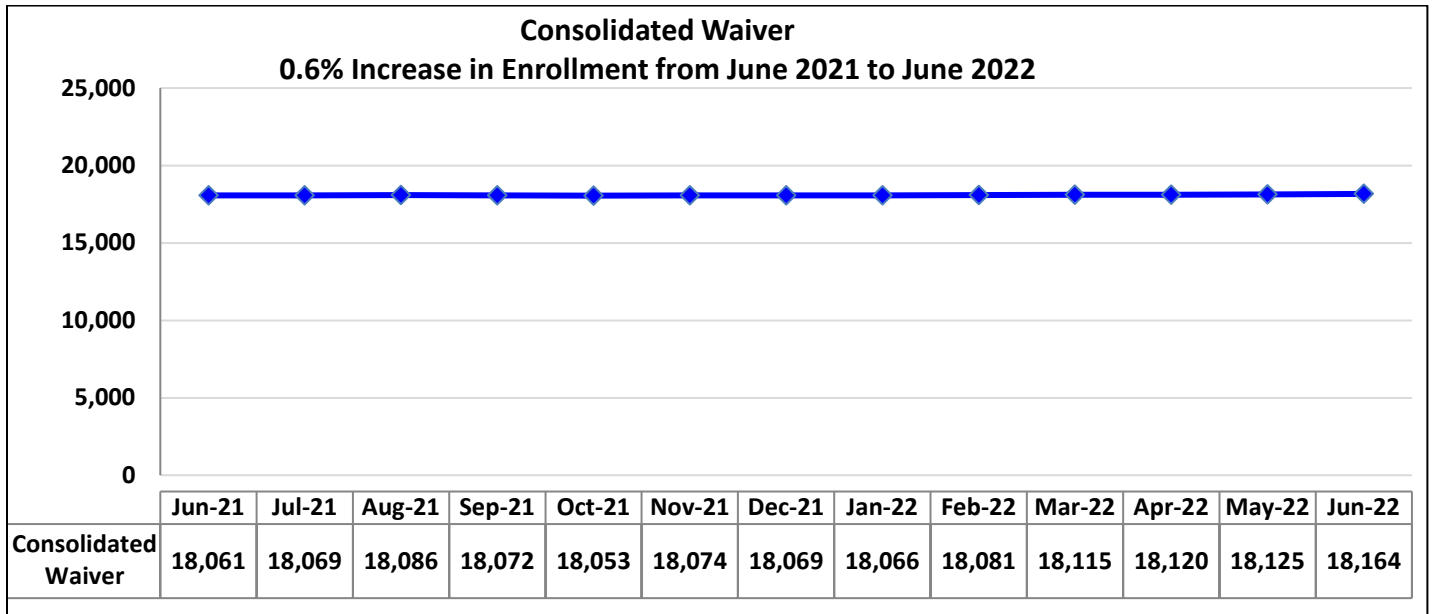
Unduplicated count of recipients which had claims in the month requested. LIFE is a managed care program and provides a comprehensive all-inclusive package of services for Pennsylvanians age 55 or older who meet the level of care needs for a Skilled Nursing Facility or a Special Rehabilitation Facility to enable them to maintain independence in their homes for as long as possible. Be age 55 or older, meet NFCE or a special rehabilitation facility, reside in an area served by a LIFE provider and be able to be safely served in the community as determined by a LIFE provider.



***Preliminary Number – will be updated as additional data becomes available**

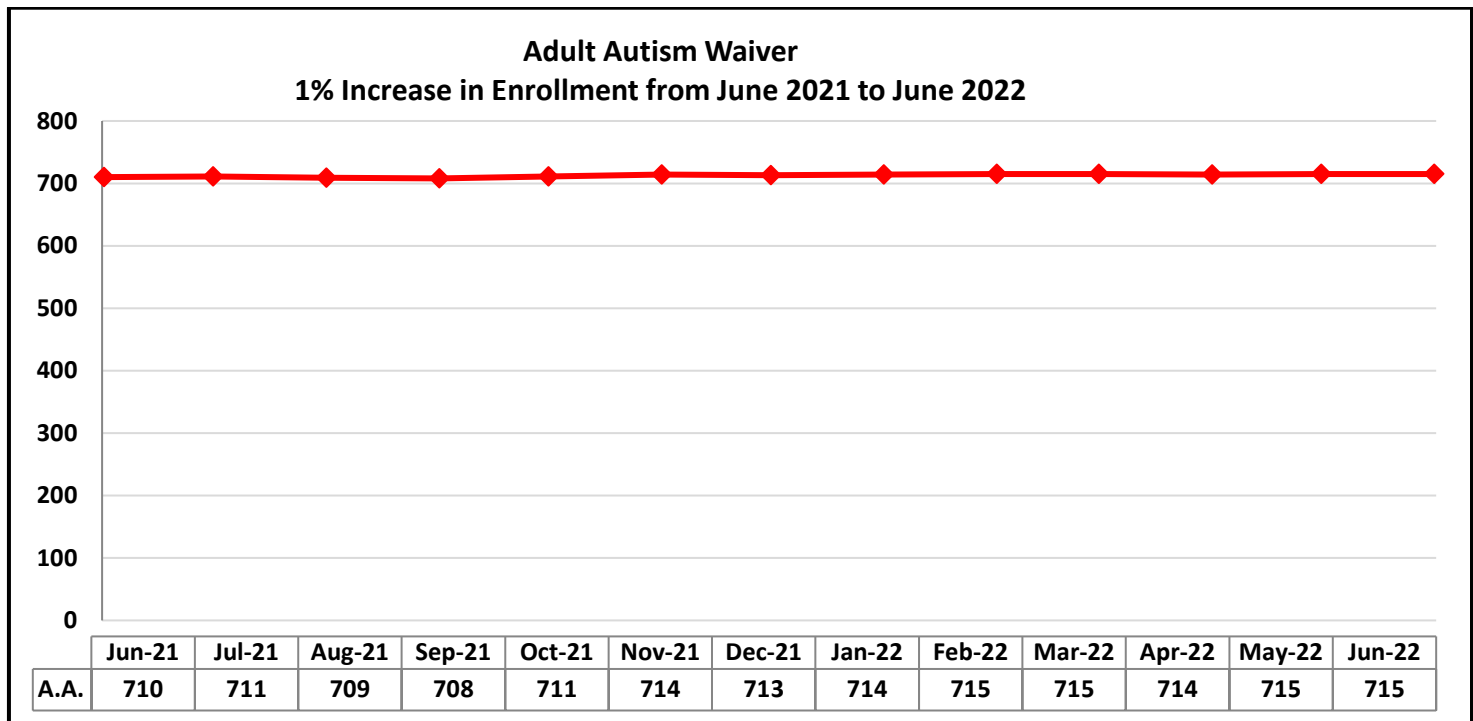
In January 2020, all counties were moved into CHC

CHC includes individuals who are 21 years of age or older and dually eligible for Medicare and Medicaid, and Individuals who are 21 years of age or older and eligible for Medicaid (LTSS) because they need the level of care provided by a nursing facility.



Source: DHS Enterprise Data Warehouse

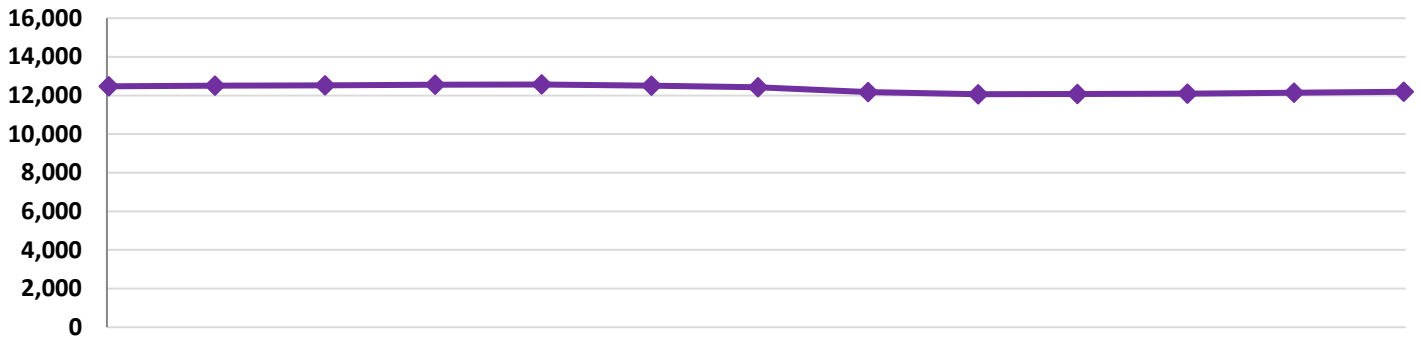
Provides home and community services, including supports coordination and environmental accessibility adaptations, for individuals with intellectual disabilities who require an intermediate care facility level of care.



Source: DHS Enterprise Data Warehouse

Provides home and community services to persons, age 21 and over, with autism spectrum disorder to help them participate in their communities.

**Person/Family Directed Support Waiver
2% Decrease in Enrollment from June 2021 to June 2022**

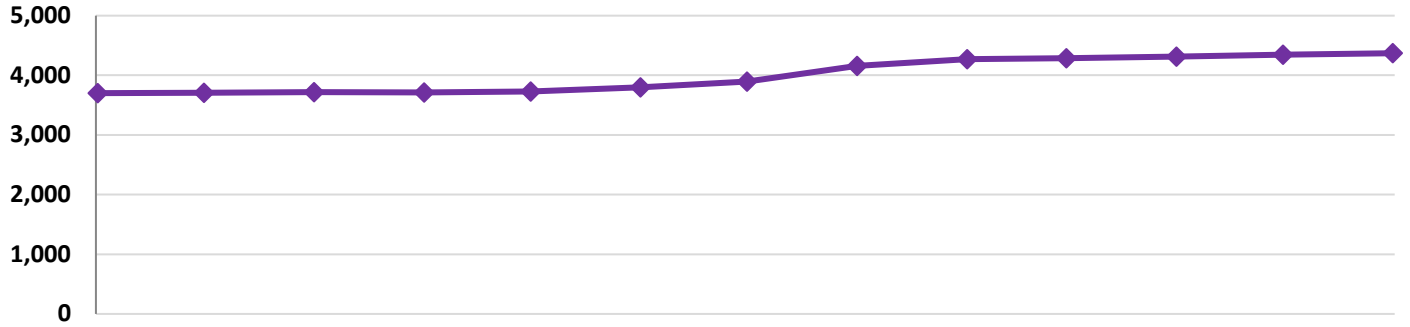


	Jun-21	Jul-21	Aug-21	Sep-21	Oct-21	Nov-21	Dec-21	Jan-22	Feb-22	Mar-22	Apr-22	May-22	Jun-22
P/FDS	12,467	12,511	12,530	12,557	12,567	12,513	12,431	12,171	12,064	12,068	12,098	12,149	12,186

Source: DHS Enterprise Data Warehouse

Provides a limited array of services and supports, such as therapy and nursing and personal support, to individuals with intellectual disabilities who require an intermediate care facility level of care. Aimed primarily at those residing in their homes or with family members.

**Community Living Waiver
18% Increase in Enrollment from June 2021 to June 2022**



	Jun-21	Jul-21	Aug-21	Sep-21	Oct-21	Nov-21	Dec-21	Jan-22	Feb-22	Mar-22	Apr-22	May-22	Jun-22
Community Living	3,701	3,706	3,717	3,715	3,731	3,801	3,894	4,158	4,272	4,289	4,313	4,344	4,370

Source: DHS Enterprise Data Warehouse

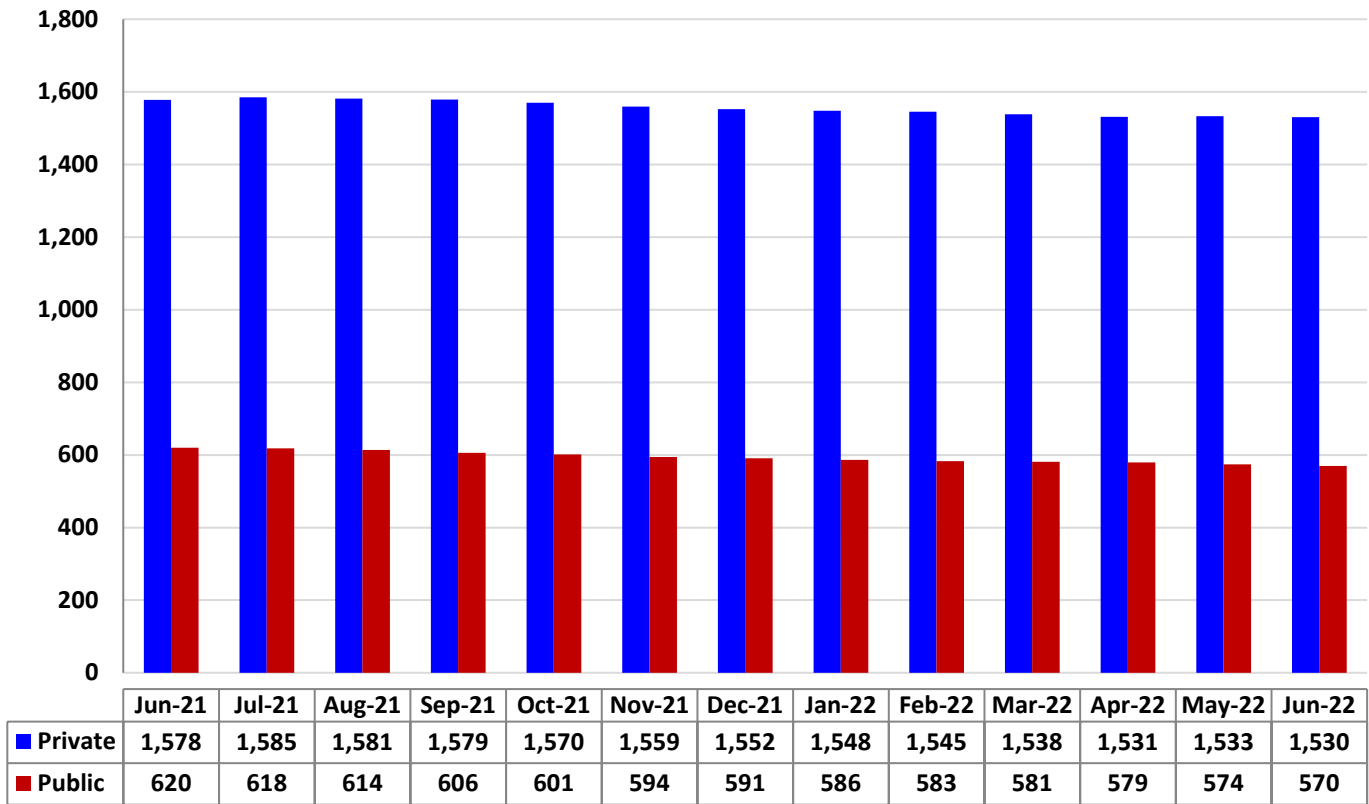
The Community Living Waiver is a new waiver that became effective in January 2018. It will support individuals to live more independently in their homes and communities through the provision of a variety of services that promote community living, employment, communication, self-direction, choice and control.

Residents in Intermediate Care Facilities for Persons with Intellectual Disabilities

(Last Day of Month)

Private ICFs/ID: 3% Decrease in Enrollment from June 2021 to June 2022

Public ICFs/ID: 8% Decrease in Enrollment from June 2021 to June 2022



Source: DHS Enterprise Data Warehouse and Mapper/FACT system

OTHER METRICS

Third Party Liability

	Previous Month	Current Month	FYTD
Recoveries (Casualty, Estate, Health Insurance and HMS)	\$9,159,138 (Feb 2022)	\$17,167,561 (Mar 2022)	\$105,000,311
Cost Avoidance (HIPP and Health Insurance)	\$15,504,088 (Feb 2022)	\$15,509,543 (Mar 2022)	\$136,822,689

Data Source: TPL Financial Accounting System

Bureau of Program Integrity

	Current Month	FYTD
Provider Review Overpayment Recoveries	\$682,312 (Mar 2022)	\$8,177,506
Recipient Restriction Cost Avoidance*	\$928,800 (Mar 2022)	\$9,172,800

Data Source: DHS Executive Dashboard